




Hardscape Installation and Maintenance Products

JOINTING PRODUCTS • PAVER CARE • ADHESIVES • EDGINGS & ACCESSORIES



Pioneer in Innovation for more than **35 Years**



Techniseal brings over 35 years of innovation and industry expertise to provide hardscape and landscape professionals with best-in-class solutions for the installation and maintenance of exterior surfaces.

Designers and installers everywhere trust the effectiveness and durability of Techniseal products for residential and commercial projects.



Total Hardscape Solution

Installers everywhere trust the effectiveness and durability of Techniseal products to keep their hardscape as beautiful as they envisioned.

TECHNISEAL BY THE NUMBERS

Over 107 Million sq. ft. of Sand coverage shipped (**3 times the size of Central Park, NY**)

Over 35 Million sq. ft. of Sealer coverage shipped (**43 times the size of the Madison Square Garden, CA**)

Over 98,000 gallons of cleaners in the field (**36 minutes of the total water dropped from the Burney Falls, CA**)



BUY



EARN



REDEEM



TECHNISEAL SUSCRIBE NOW TO CONTRACTOR REWARDS!

**AS A THANK YOU FOR YOUR TRUST, WE INVITE YOU TO SIGN UP FOR THE CONTRACTOR REWARDS PROGRAM AT:
WWW.CONTRACTORREWARDS.COM**

- **Earn** points when you purchase products through techniseal.com or any other eligible manufacturer.
- **Submit** proof of purchase and collect Reward Points.
- **Redeem** your points for products or services, for you and your team, selected from a catalog of over a thousand rewards!

GET REWARDED FOR YOUR BUSINESS

Note: The Contractor Rewards Program is open exclusively to landscaping professionals located in Canada and the United States. Reward points can be earned by purchasing products from Techniseal or other top manufacturers in the construction industry.

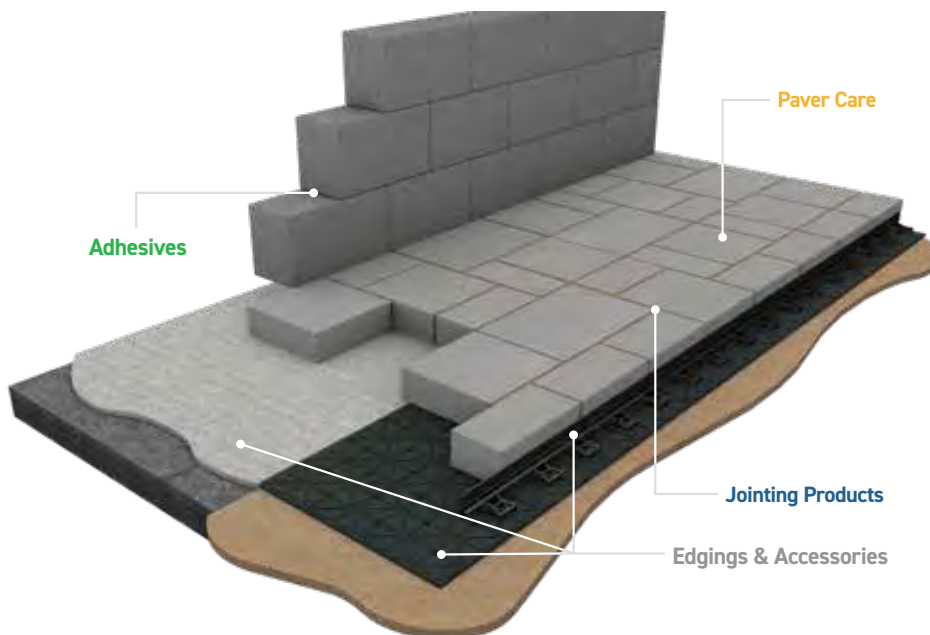


Table of Contents

Jointing Products 4-9

Paver Care 10

Stain Removers & Cleaners 11

Multi-Surface Protectors 12-13

Adhesives 14-15

Edgings & Accessories 16-19

Jointing Products

Go for the Original Brand!

After developing the first polymeric sand for paver joints in 1998, Techniseal continued to develop increasingly efficient products for the installation of pavers, natural stones, and porcelain tiles. Amongst these, HP NextGel™ and SMARTSAND®, two polymeric sands benefitting from the innovative NextGel technology, NOCO™, a “No Compaction” jointing solution, and NOCOSTORM™, a multi-weather permeable jointing compound.

Often imitated, never duplicated, our industry-leading installation products are still the most reliable jointing technologies in the business.



**FASTER
WETTING
FASTER
INSTALLATION**

NextGel™ allows water to flow much easier and in a more consistent manner to the bottom of the joints. Moreover, it controls how and when additive particles start reacting with water, making wetting up to 6 times faster and **installation 40% quicker than the nearest competitor.**

NO HAZE

NextGel™ makes jointing sand flow over the surface, making sweeping exceptionally easy. It also **eliminates the penetration of additive particles into the pores of the concrete,** which is the primary cause of unwanted haze.

NO WASTE

With traditional polymeric sand, up to two bags can be wasted on a typical 1000 sq. ft. installation. This is due to the fact that the fine particles separate from the mix during sweeping. The NextGel™ technology solves this problem by generating a homogeneous particle size, which preserves the full integrity of the product. **Leftover sand can, therefore, be reused elsewhere on the job site or the next project.**



Techniseal® Jointing products contribute to LEED credits, based on the use of regional and recycled materials.

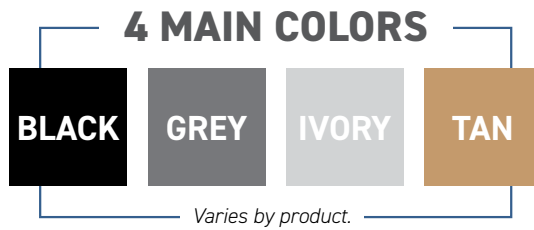


Techniseal Polymeric sands are well below OSHA's respirable crystalline silica limits ("RCS") for construction material.



Jointing Products

POLYMERIC JOINTING PRODUCTS THE PERFECT COLOR FOR YOUR PROJECT



Shades of colors may vary by region for all our jointing products. Ask about the specific colors available in your area. Shipping fee may apply.

Desert Tan 40104121	Iron Grey 40104120	Prairie Tan 40100611	Rocky Tan 40100614	Western Grey 40100612	Black 40100613
Tan 40105082	Granite 40104120	Ash Grey 40101235 40100606	Atlantic Tan 40100235 40100236	Black 40108003	Bourbon Tan 40101224 40100592
Cali Tan 40100505 40100224	Carolina Granite 40100098 40101150	Granite 40101219 40100597	Ivory 40105613	Mohave Tan 40101231 40105501	Prairie Grey 40101228 40100396
Prairie Tan 40101227 40100397	Rocky Tan 40100615 40100616	Southern Granite 40100094 40100093	Southern Grey 40101226 40101147	Southern Tan 40101225 40101146	Summit Grey 40100097 40105142
Tan 40101218 40100596	Urban Grey 40101220 40100598	Western Grey 40101229 40100590	Western Tan 40101230 40100251		

These colors are for reference only. Actual color may vary.

Jointing Products



SMARTSAND®
with NextGel™ TECHNOLOGY

THE SMART CHOICE FOR YOUR EVERYDAY INSTALLATIONS

Manufactured with the NextGel™ technology, SMARTSAND® is a cost-effective alternative to HP NextGel™, when high-performance sand is not required. Its “quick activation” formula makes it ideal for everyday installations, such as standard driveways, patios and walkways.

Ideal for residential projects

Designed for optimal jointing of interlocking pavers

Ideal for narrow joints from 1/16"-3/8" with intersecting spaces up to 1"

For pedestrian and low-traffic areas such as driveways, walkways, patios, etc.

2 main colors: Tan and Grey
(colors vary by region)



HP NextGel™
THE ONLY REAL
NO HAZE NO DUST ALTERNATIVE

THE HIGH-PERFORMANCE JOINTING SAND VALUED BY TOP INSTALLERS

HP NextGel™ is the only true high-performance jointing sand on the market. Often imitated, the superior HP formula remains unsurpassed, both in terms of performance and ease of installation. Avoid pale imitations, always go for the original!

For residential, commercial, industrial and public projects where mechanical compaction is possible and/or mandatory

Ideal for concrete, wet-cast, textured or clay pavers and porcelain tiles (only if mechanical compaction is possible)

For false joints

Ideal for joints from 1/16"-1" with intersecting spaces up to 2"

For high-humidity areas, with heavy or no slope, and high-traffic areas

4 main colors: Ivory, Black, Tan and Grey
(colors vary by region)

Jointing Products



NOCO™ NO COMPACTION

THE FIRST POLYMERIC JOINTING PRODUCT SPECIFICALLY DEVELOPED FOR NATURAL STONE

NOCO™ is a "No Compaction" polymeric joint specially developed for the installation of flagstones and other paving materials for which mechanical compaction is not possible or difficult. Ideal for flagstones, wet cast pavers (such as imitation European cobblestone), large slabs and false joints; NOCO™ can be used on concrete overlay or cement-sand base bedding. It is a clean, easy and fast alternative to mortar and stone dust jointing.

For residential, commercial, industrial and public projects where mechanical compaction is either not possible or traditionally not used

Ideal for flagstone, concrete and wet-cast pavers such as imitation of CobbleStone, highly textured surfaces, large slabs and porcelain tiles (when joints are 1/4" or larger)

For false joints

Ideal for wide joints from 1/4"-2" with intersecting spaces up to 4"

The true alternative to mortar, stone dust and polymeric stone dust

2 main colors: Tan and Grey
(colors vary by region)



NOCO STORM™

NEW JOINTING COMPOUND THAT WORKS UNDER WET OR DRY WEATHER CONDITIONS

Don't let rain showers slow you down with NOCOSTORM™, a new-generation permeable jointing compound that works in a wide range of weather conditions. Perfect for residential projects such as walkways, pool decks, patios, and non-vehicular areas, NOCOSTORM™ is suited for the jointing of pavers, natural stone, and outdoor porcelain.

For installations carried out on draining base, with EZBase foam panels, cement/sand bedding. A porous draining base is required for proper installation.

Ideal for natural stone, concrete pavers, wet-cast pavers, clay pavers, large slabs and outdoor porcelain

Save unused material for the next job site!

Ideal for wide joints from 1/8"-2" with intersecting spaces up to 4"

For walkways, pool decks, patios and non-vehicular areas

Available colors: Black, Granite and Tan

Jointing Products



Jointing Products



Paver Care



The Techniseal® Advantage The Ultimate Protection System

Techniseal's thorough 3-step treatment system produces the best results:



1 CLEAN any existing stains to avoid trapping them under a protective sealer or limiting its effectiveness.



2 PREPARE the entire surface to open up pores in the concrete and achieve deeper penetration, better adhesion and added durability of a protective sealant.



3 APPLY the sealer with care to ensure complete and even coverage. For best results, we recommend that the application be carried out by a professional.



The importance of cleaning before sealing

When sealing new pavers for the first time, it is essential to clean the surface in its entirety to prevent the formation of whitish efflorescence stains that could remain trapped under the sealer's protective film.

Older pavers are oftentimes stained with dirt, motor oil, grease, rust, and other organic residues. That is why it is of utmost importance to clean these before applying any surface protector. **Sealing dirty pavers will never give the intended results and might even compromise the longevity of the sealer.**

Whether it's for the seasonal cleaning of pavers or the pre-seal preparation of a surface, Techniseal® offers an extensive line of stain removers and specialized cleaners for consistent high-end results.

Environmentally Friendly

- Our products emit very low VOC levels in the atmosphere.
- Leading the way with environmentally-friendly water-based products in every aesthetic finish.

Techniseal film-forming Protectors are microporous

- Allows moisture to escape, stays clear and lasts many years.

Exceptional Stain and Weathering Protection

- All Techniseal paving sealers have both water- and oil-repellent properties which are not found in low-quality sealants allowing the penetration of contaminants that can permanently stain the surfaces.
- Made with the very best resins, they form either a durable film or a chemical bond that will prevent the penetration of water and oil.

Stain Removers & Cleaners

1 CLEAN



A

PROFESSIONAL-GRADE OIL & GREASE REMOVER

- Dislodges deeply set petroleum-based products, motor and hydraulic oil
- Dries into a powder for easy cleanup
- Ideal for bare surfaces and older, stubborn stains

1 qt. 60300025



B

DIRT & GREASE CLEANER

- Removes motor oil and grease (BBQ)
- Dissolves, dislodges and encapsulates grease
- Ideal for sealed surfaces and fresh stains

1 qt. 60101030



C

RUST REMOVER

- Removes stains caused by steel, rusted metal objects and fertilizers
- For bare or previously sealed surfaces
- Will not discolor pavers; does not contain muriatic acid

1 qt. 60101956



D

PAINT, TAR AND RUBBER REMOVER

- Dissolves paint, tar or bitumen, rubber and chewing gum
- Water-rinsable

1 qt. 60100780



E

ORGANIC STAIN REMOVER

- Effectively removes moss, mildew, dead leaves, wine, blood and non-greasy food stains
- Requires minimum scrubbing

25 oz. 60100007

2 PREPARE



F

PAVER RESTORER

- Removes haze created by some polymeric sands
- Removes stains generated by pavers and slabs cuts

1 gal. 60301605
5 gal. 60201005



G

PAVER PREP / HD PAVER PREP / EFFLORESCENCE CLEANER

- Dislodges efflorescence and ground-in dirt
- Prepares pavers before the sealant application
- Brightens up the color of pavers

PAVER PREP		HD PAVER PREP	
1 gal.	60301603	1 gal.	60105008
5 gal.	60301602	5 gal.	60105009

HD Paver Prep: North America compliant except for SCAQMD

3 APPLY



SLIT-FOAM ROLLER

- Slit to apply solvent-based Protectors evenly
- Remains spongy to absorb any extra sealant
- Solvent resistant
- Barricade tape included

70971145

ECO-STRIPPER

- Removes most stains, sealants and coatings without affecting the surface
- Eco-friendly; does not damage vegetation or substrate

5 gal. 60201004

Please contact your Techniseal® dealer for product availability

SLURRY REMOVER

- Removes cement slurry and mortar jointing haze
- For bare surfaces, concrete or clay pavers and slabs

1 gal. 60101231
5 gal. 60200413

Compliance territories:

OTC: ME, VT, NH, MA, RI, CT, NJ, DE, MD, DC, VA, PA, NY.
CARB: San Francisco Bay Area, CA.
SCAQMD: LA, Orange, Riverside and San Bernardino Counties, CA.
Note: This information is subject to change.

Multi-Surface Protectors

Choice of 4 looks and finishes



Comparison Chart

Label Color Code	Sealer	Water-Based or Solvent-Based	Film-Forming or Penetrating	All-in-One Sealer & Joint Stabilizer	Ideal for	Finish	Product Code
	iN Natural Look	Water-Based	Penetrating		Concrete, Clay & Wet-Cast Pavers, Poured Concrete and Natural Stone	Matte	1 Gal: 60305100 5 Gal: 60304120
	NS Natural Look	Water-Based	Film-Forming		Concrete Pavers & Aggregates	Matte	1 Gal: 60301881 5 Gal: 60101582
	JS Satin Look	Water-Based	Film-Forming		Concrete Pavers & Aggregates	Satin	1 Gal: 60301707 5 Gal: 60101975
	CB+ CB Color Boost	Water-Based	Penetrating		Concrete Pavers & Natural Stone	Matte with Color Enhancement	1 Gal: 60301612 5 Gal: 60301611 1 Gal: 60300127 5 Gal: 60300126
	JSW Wet Look	Water-Based	Film-Forming		Concrete Pavers & Aggregates	Gloss Color Enhancement	1 Gal: 60301801 5 Gal: 60301731
	JSS Wet Look (Available only in UT and SCAQMD)	Solvent- Based	Film-Forming		Concrete & Wet-Cast Pavers, Natural Stone & Aggregates	Gloss Color Enhancement	1 Gal: 60300431 5 Gal: 60300432
	WL4 Wet Look (North America compliant except UT and SCAQMD)	Solvent- Based	Film- Forming		Concrete Pavers	Gloss Color Enhancement	1 Gal: 60301534 5 Gal: 60301535
	WLWR Wet Look (North America compliant except UT and SCAQMD)						1 Gal: 60301302 5 Gal: 60301303
	WL-87 Wet Look	Solvent- Based	Film- Forming		Concrete & Wet-Cast Pavers, Natural Stone & Aggregates	Semi-Gloss	1 Gal: 60300365 5 Gal: 60300422
N/A	WR7 Water Proofing	Water-Based	Penetrating		Horizontal and Vertical, Brick & Concrete Surfaces	Matte	1 Gal: 60303570 5 Gal: 60303580

3 APPLY | WATER-BASED



NATURAL LOOK (IN) MATTE FINISH PAVER PROTECTOR PENETRATING SEALER

- Preserves the natural look
- Ideal for slip-prone surfaces
- Stain guard - repels contaminants

1 gal. 60305100
5 gal. 60304120

**FOR CONCRETE, CLAY & WET-CAST
PAVERS, POURED CONCRETE AND
NATURAL STONE**



NATURAL LOOK (NS) MATTE FINISH PAVER PROTECTOR FILM-FORMING, ALL-IN-ONE SEALER & JOINT STABILIZER

- Preserves the natural look
- Stabilizes sand or aggregate joints
- Stain guard

1 gal. 60301881
5 gal. 60101582

FOR CONCRETE PAVERS & AGGREGATES



SATIN LOOK (JS) SATIN FINISH PAVER PROTECTOR FILM-FORMING, ALL-IN-ONE SEALER & JOINT STABILIZER

- Enhances the look of pavers
- Stabilizes sand or aggregate joints
- Stain guard

1 gal. 60301707
5 gal. 60101975

FOR CONCRETE PAVERS & AGGREGATES



COLOR BOOST (CB+, CB) MATTE FINISH PAVER PROTECTOR PENETRATING SEALER

- Color enhancement
- Ideal for slip-prone surfaces
- Stain guard - repels contaminants

CB+ (North America compliant except UT and SCAQMD)
1 gal. 60301612
5 gal. 60301611

CB (Available only in UT and SCAQMD)
1 gal. 60300127
5 gal. 60300126

FOR CONCRETE PAVERS & NATURAL STONE



WET LOOK (JSW) GLOSS FINISH PAV ER PROTECTOR FILM-FORMING, ALL-IN-ONE SEALER & JOINT STABILIZER

- Enhances the color of pavers
- Stabilizes sand or aggregate joints
- Stain guard

1 gal. 60301801
5 gal. 60301731

FOR CONCRETE PAVERS & AGGREGATES



SUREFOOT | ANTI-SLIP GRIT FOR WATER-BASED PROTECTORS

- Mixes easily with Protector without changing its appearance
- Compatible with water-based film-forming protectors (NS, JS, JSW)

4 oz. 60102088

**HIGHLY RECOMMENDED FOR POOL
DECKS AND SLOPED DRIVEWAYS, STEPS,
LOW-POROSITY SUBSTRATES, ETC.**



NATURAL LOOK (WR7) MATTE FINISH WATERPROOFING SEALANT FOR BRICK & CONCRETE PENETRATING SEALER

- Preserves the natural look of concrete
- Prevents crumbling and spalling caused by salt and freezing cycles
- Ideal for brick, concrete or stone facades
- Helps prevent efflorescence

1 gal. 60303570
5 gal. 60303580

**FOR HORIZONTAL AND VERTICAL,
BRICK, CONCRETE OR STONE SURFACES**

3 APPLY | SOLVENT-BASED



WET LOOK (JSS) GLOSS FINISH PAV ER PROTECTOR FILM-FORMING, ALL-IN-ONE SEALER & JOINT STABILIZER

- Enhances the color of pavers
- Stabilizes sand or aggregate joints
- Stain guard

JSS (Available only in UT and SCAQMD)
1 gal. 60300431
5 gal. 60300432

**FOR CONCRETE & WET-CAST PAVERS,
NATURAL STONE & AGGREGATES**



WET LOOK (WL4, WLWR) HIGH-SOLID GLOSS FINISH PAVER PROTECTOR FILM-FORMING SEALER

- Enhances the color of pavers
- Forms a protective film
- Stain guard

WL4 (North America compliant except UT and SCAQMD)
1 gal. 60301534
5 gal. 60301535

WLWR (North America compliant except OTC, CARB, SCAQMD, IL, IN, OH, UT)
1 gal. 60301302
5 gal. 60301303

FOR CONCRETE PAVERS



WET LOOK (WL-87) SEMI-GLOSS FINISH JOINT STABILIZING SEALER

- Seals and protects, enhances color, stabilizes sand or aggregate joints
- Resists unexpected rain after 80 minutes
- Breathable, rapid installation sealer

WL-87 (North America compliant except UT and SCAQMD)
1 gal. 60300365
5 gal. 60300422

**FOR CONCRETE & WET-CAST PAVERS,
NATURAL STONE & AGGREGATES**



SUREFOOT | ANTI-SLIP GRIT FOR SOLVENT-BASED PROTECTORS

- Mixes easily with Protector without changing its appearance
- Compatible with solvent-based film-forming protectors (WL5, JSS, WL4, WLWR)

5.6 oz. 60102089

**HIGHLY RECOMMENDED FOR POOL
DECKS AND SLOPED DRIVEWAYS**

Compliance territories:
OTC: ME, VT, NH, MA, RI, CT, NJ, DE, MD, DC, VA, PA, NY.
CARB: San Francisco Bay Area, CA.
SCAQMD: LA, Orange, Riverside and San Bernardino Counties, CA.
Note: This information is subject to change.

Adhesives



Structure Bond™ is an innovative super-strength foam adhesive that bonds a wide range of construction materials such as concrete, stone, brick, wood, metal, as well as composite materials.

Made from high-quality modified polyurethanes, it's adhesive strength is unmatched among all types of polyurethane adhesives. Application time is up to 50% faster than with conventional tube adhesives.

Materials are bonded in just 8 minutes, and the adhesive fully cures within 24 hours.



A STRUCTURE BOND™ FOAM ADHESIVE

- Super-strength hardscape foam adhesive
- Developed for the construction industry
- Precise delivery - No mess, no waste
- Adjustable bead size
- Works on wet and cold surfaces
- High-yield content

24 oz 60050798



B STRUCTURE BOND™ CLEANER

- Specifically designed to fit Structure Bond™ Gun
- Makes the removal of foam adhesive spillage on any solvent-resistant surface easier than ever before
- A powerful and innovative cleaning solution to get rid of non-cured foam adhesive

16.9 oz 60050800

C STRUCTURE BOND™ GUN

- Gives added precision
- Specifically made for use with Structure Bond products
- Allows for a cleaner application with minimal dripping
- Combines light weight with strong durability
- Built to minimize waste and facilitate the application
- No user fatigue

60050802

Also available:



Structure Bond™ gun allows for a precise delivery with a single pull of the trigger.

Amazing 600-foot yield with a 3/8" bead!



Note: Set time will vary according to air moisture

ALSO AVAILABLE

RG+ VERSATILE - FLEXIBLE

RG+ CONCRETE ADHESIVE

- Ultra-adherent on dry, wet or frozen surfaces
- Low-VOC formula
- Elastomeric resin-based compound - remains flexible
- Ideal for the construction of retaining walls

10 fl.oz 60050381

28 fl.oz 60050541



Adhesives



STICKYSTONE™

VERTICAL HARDSCAPE ADHESIVE

Versatile quick-tack adhesive for manufactured stone, natural stone, outdoor porcelain tile, and a variety of substrates. Ideal for hardscape applications such as: outdoor kitchens, fireplaces, firepits, columns, mailboxes, doghouses, etc.



A

A STICKYSTONE™ VERTICAL HARDSCAPE ADHESIVE

- Superior initial grab strength; resists sagging
- Applies easily with applicator gun
- Resists UV and weathering effects
- Solvent-free, low odor, low VOC
- Single-component adhesive

20 oz 60050572



B

B STICKYSTONE™ HARDSCAPE ADHESIVE GUN

- Professional quality
- Efficient 12:1 Drive ratio
- Lightweight aluminum barrel
- Double grip plates for long life
- Converts to 10 oz (300 ml) cartridge or 20 oz (600 ml) sausage

60050571



Also available:



Ideal for hardscape applications such as: outdoor kitchens, fireplaces, firepits, columns, mailboxes, doghouses, etc.

Edgings & Accessories



EDGE BOND™

- FASTEST & EASIEST installation on the market
- More than 10% extra coverage
- Ideal for permeable installations
- Smooth, uniform finish
- Maximum workability
- Dispersible reinforcement fibers

50 lb. 70975209

NEXTGEL™ FORTIFIED HARDSCAPE CONCRETE EDGING

EDGE BOND™, with maximum workability, is the perfect alternative to plastic edging and spikes.

EDGE BOND™ is the perfect choice for:

- Traditional, open graded or permeable installations
- NEXTBASE™ foam panel installations
- Concrete overlay installations
- Concrete pavers, wet-cast pavers, clay pavers, natural stone, slabs, textured pavers
- Commercial, residential and public projects
- Pedestrian and vehicular use

- Ready-to-use - simply add water
- Paintable or sealable if used as decorative edging
- Freeze and thaw resistant
- Alternative to plastic edging and spikes
- Additional strength and stability (when compared to traditional plastic edging)



COVERAGE 16 to 20 linear feet per 50 lb bag. The amount required will depend on the shape and size of the edging.

NextGel™ is a revolutionary technology that radically transforms and improves the properties and behavior of jointing products and additives.

Edgings & Accessories



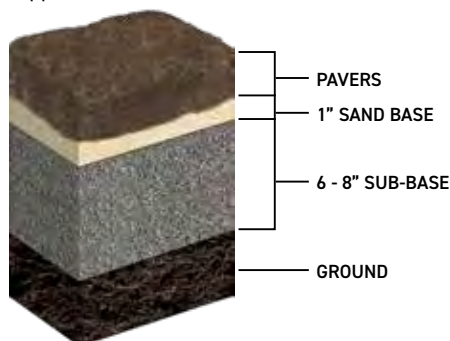
NEXTBASE™

- Each panel replaces up to 300 lb. of base aggregates
- Interlocking system
- Panels can be rotated 90° angle
- Integrated cutting marks every 3"
- Easy & fast to install
- Saves up to 8 inches of excavation
- Durable - will not degrade in the ground
- Improved water drainage capacity
- 21 3/4" X 42 3/4"

70971011

TRADITIONAL METHOD

(Approx. 9 to 11" of excavation)



NEXTBASE Panel Base System

Eliminate deep, time-consuming excavations

Imagine a patio or a walkway that installs with less work, less expense and with no special tools or materials.

NextBase™ is the new generation of high-density panel base system that replaces traditional compacted aggregate-base installations. It provides great stability to hardscape installations while reducing the required excavation. NextBase™ panels are easy to cut and feature drainage holes, slopes and channels for water control and an interlocking system for added stability.

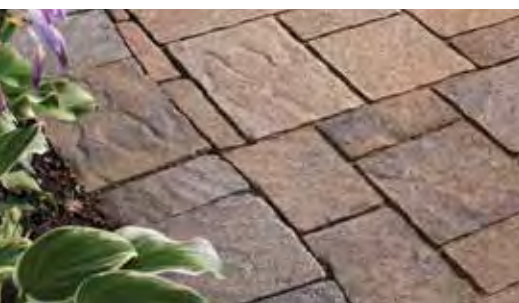
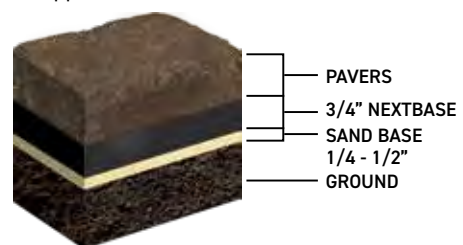
Save time, labor and money.



Ideal for paver, porcelain tile and natural stone installations

NEXTBASE™ METHOD

(Approx. 3" of excavation)



Edgings & Accessories

NO MORE CONCRETE REMOVAL!



DRI-BOND™

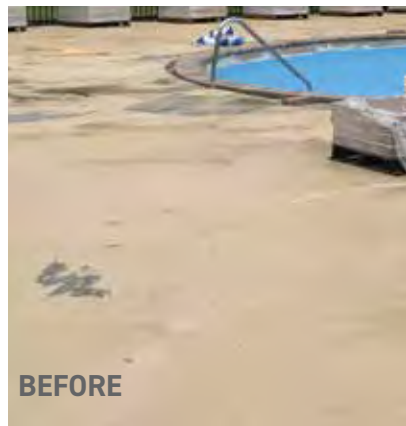
- Ideal for thin paver overlays
- Driveways, patios, pool decks and sidewalks
- Dry application
- Polymer-modified
- No mixing - ready to use
- Reduces installation time
- Cost-efficient

50 lb. 65302166

DRI-BOND™ Advanced Dry Mudset For Concrete Overlays

Changing The Way You Overlay

DriBond™ is a dry mudset specially designed for the overlay of pavers over existing concrete. With DriBond™, there is no need to remove the existing concrete substrate. It can be installed quickly and easily over most sound concrete surfaces. Use BorderBond™ for border pavers.



BORDERBOND™

- Easy to use – Straight from the bottle
- Easily mixes with DriBond™
- Maximizes bond strength of DriBond™

1.58 gal. 60050792

SCREED TOOL

- Made from high-grade durable aluminum
- Easy leveling of DriBond™ dry mudset
- Faster application and perfect result

70978070



TYPICAL CROSS SECTION

DRI-BOND

○ PAVERS

Covers existing cracks

○ EXISTING CONCRETE

1"

5/8"

3 - 4"

Edgings & Accessories



Paver Edging

The perfect edging for the perfect hardscape project

40 feet of Edging in a Compact Package



40-FOOT COIL PAVER EDGING

- **Flexible and durable**
- Makes it easy to create aggressive curves
- Compact coil offers 40' (12 m) of edging in a small package
- No more messy broken bundles
- Made from 100% recycled material
- Easy transport, storage and handling

70971149

CUT on THE GO Design System



8-FOOT PAVER EDGING

- **Easy snap connection**
- Can easily be cut on the ground
- Convenient and easy to use
- Heavy duty injection molded
- Made from 100% recycled material
- 1 5/8" high

70971148



LOW PROFILE ALUMINIUM EDGING

- **Discreet - A low profile design that conceals the edging for a crisp installation.**
- Weather-resistant - Won't deteriorate from exposure to the sun, frost, etc.
- Flexible - Easy to bend by hand into any curve or create 90° angles without cutting.
- Versatile - Ideal for the installation of pavers, flagstones, bluestones, granite, porcelain pavers and more.
- Each section is 8' 4" long and 5/8" tall.
- Made of 6063 aluminum alloy with T-5 hardness.
- Resists rust

70973071

ALSO AVAILABLE

PAVER EDGING NAILS

- **Heavy-duty 10" nails**
- Perfect for use with Techniseal hardscape edgings

70971150



Tile Spacers

PLASTIC TILE SPACERS

- **0.39" height ensures a deep, stable corner joint filled with more jointing material**
- Guarantees even spaces between tiles
- Saves time & effort on installation
- 2.5" diameter
- Spacing width: 5/32"
- Ideal for use over NEXTBASE™ foam panels

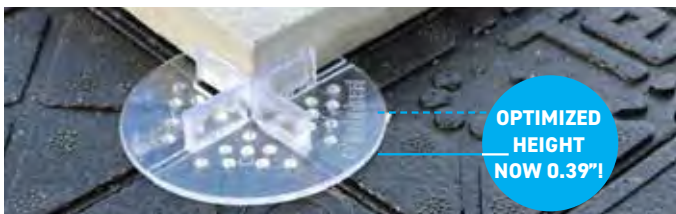
70975916



RUBBER TILE SPACERS

- **Noise reduction properties**
- Ideal for porcelain tiles
- Provides added stability
- Guarantees even space between tiles
- Built with high-quality material
- Saves time & effort on installation
- 3" diameter
- Spacing width: 3/16"

70971151



OPTIMIZED
HEIGHT
NOW 0.39"!





Discover Techniseal's complete range of products for the installation, maintenance, and protection of exterior surfaces.



Consult all product's technical information and warranty conditions.



Find a dealer with our dealer locator.



Watch educational video clips on the application of Techniseal® products.

service@techniseal.com | 1 800 465-7325 | techniseal.com



341-414-09/22