



**Integrated covers that blend seamlessly into your landscape.**

HIDE Covers seamlessly integrate with your outdoor landscape, designed to accommodate any surface material right into the cover itself. This innovation allows for a luxurious, cohesive outdoor space that beautifully blends functionality with elegance.

With HIDE's cutting-edge solutions for skimmer boxes, access points, and drain covers, you can achieve a sophisticated, upscale finish.



**SAFE.  
SEAMLESS.  
STUNNING.**



Your Custom HIDE Cover, protecting your investment

Replaces unsightly, unsafe covers



# Custom Inlay Covers

AUSTRALIAN MADE



**Attention to detail for a high-end finish!**

SKIMMER LIDS | ACCESS & DRAIN COVERS | CONCRETE READY



## SKIMMER COVERS



### Attention to detail for a high-end finish!

Beautifully tiled pools and landscaped courtyards with HIDE covers showcase considerate design and innovative construction techniques.

The range of HIDE Covers provide a sophisticated, seamless alternative in any location.

### Hidden Skimmer Covers designed to beautify and protect your landscape

- Matches the surrounding landscape
- Pool safe compliant
- Eliminates stone/tile chipping & cracking
- Sold as a complete kit
- Replaces a traditional plastic lid

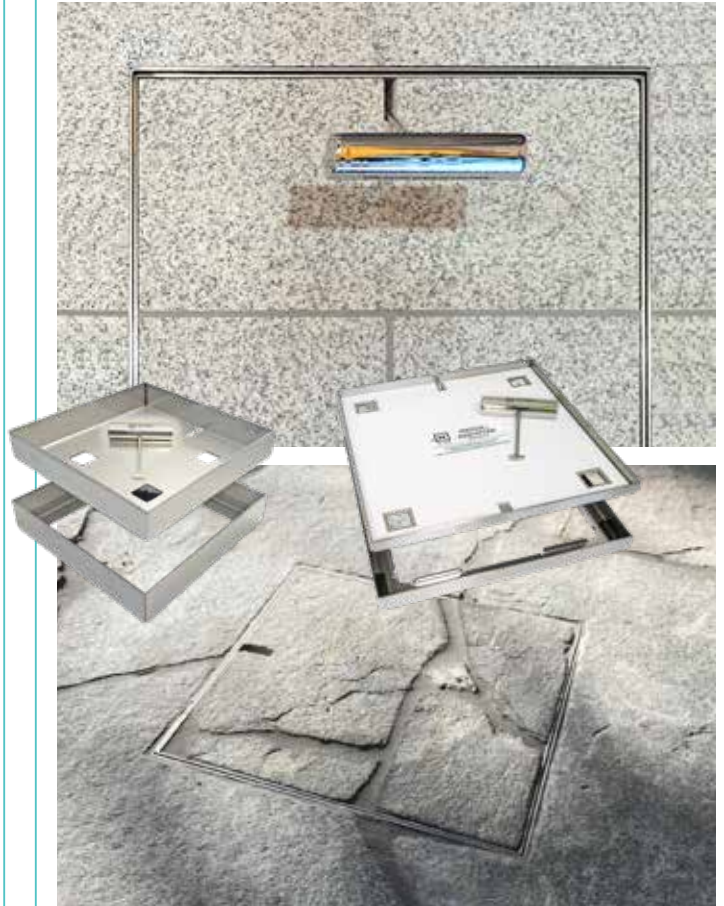
## ALL INCLUSIVE KIT

### Over 40 sizes to suit most applications

Escanee el código QR en el frente de la caja para obtener instrucciones en español.



## ACCESS COVERS



## A COVER FOR ALL OCCASIONS

**HIDE Access Covers** are designed to conceal service points in your outdoor areas. Allowing the cover to blend seamlessly into your selected surface.

HIDE Access Covers are available in a selection of sizes and depths.

Access covers conceal entry to all service points:

- IO & Bolted trap screw (BTS)
- Water table pipe
- Water and balance tanks
- Taps and irrigation
- Valves and meters
- Electrical junction box

Discuss HIDE installation at the early stages of your new landscape design.

HIDE is specified for install in pedestrian areas.



## CONCRETE COVERS



### WET-POUR READY

All kits at depths 1.6" to 2.5" are suitable for concrete wet-pour. These kits do contain a concrete conversion pack with snap in components and instructions.

The HIDE Concrete Cover with specially designed Edge Protector, provide the perfect solution for a concrete finish.

The cover is filled and finished at the same time as the pool surrounds. This ensures the lid perfectly matches the selected surface finish in texture and color.

If you are finishing your landscape in a decorative concrete, the HIDE Concrete Skimmer Cover is the only product for you!

[Conversion Parts explained here >>>](#)



## DRAIN COVERS

HIDE Drain covers allow for your chosen landscape material to seamlessly conceal the drain access, resulting in a visually appealing and discreet service cover.

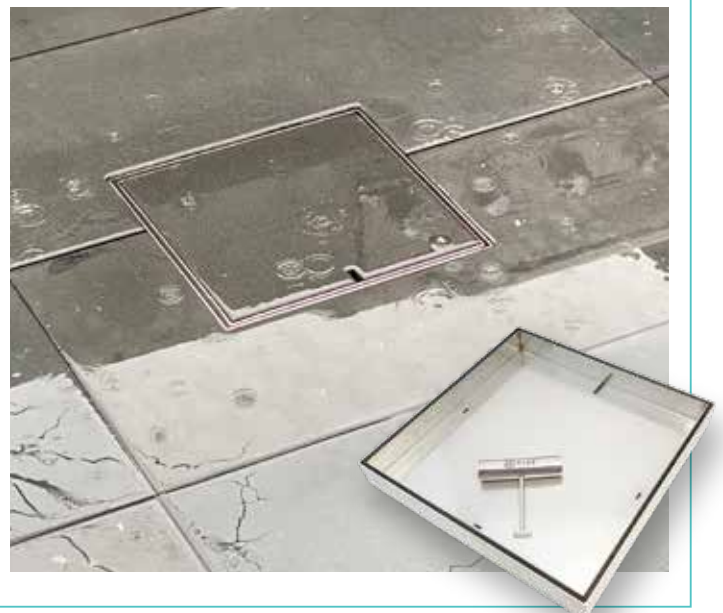
HIDE Drain Cover Kits are designed to allow water to flow from outdoor patio areas providing long term durability and improved visual appeal.

Consult your drain layer for site water flow and outlet suitability.

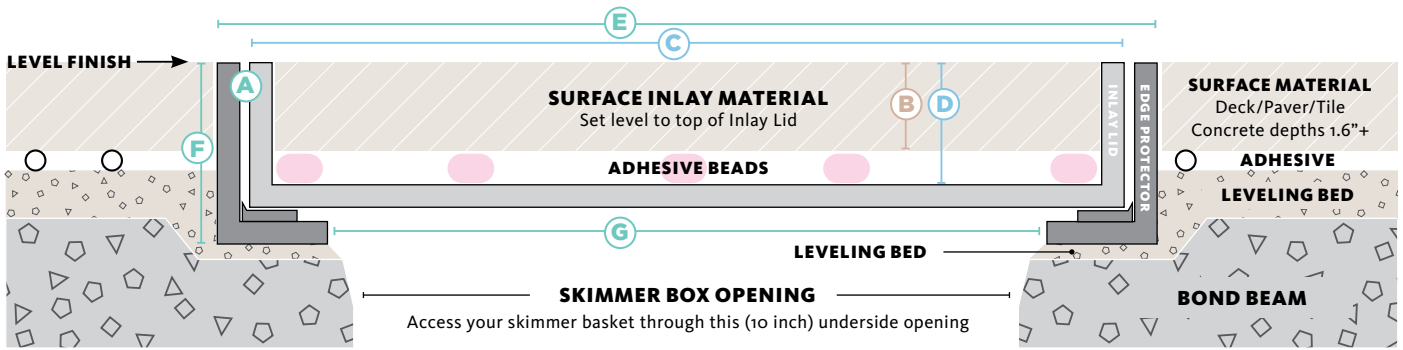
HIDE is specified for install in pedestrian areas.



### STUNNING RESULTS



# SKIMMER COVER SIZES

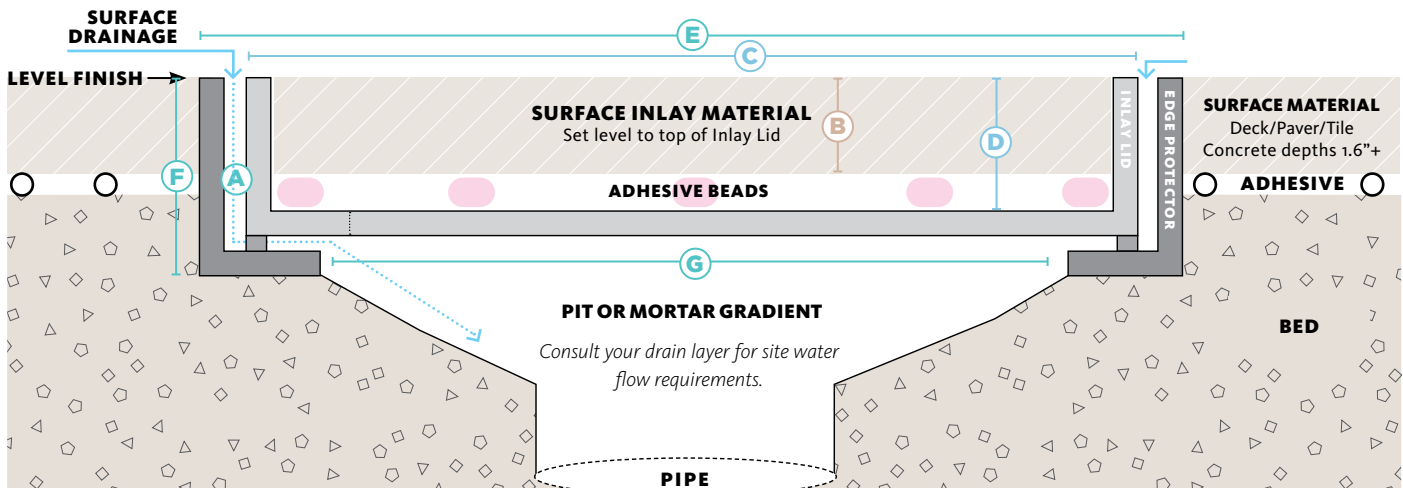


HIDE KIT PRODUCT ORDER CODE	MATERIAL THICKNESS			INLAY LID		EDGE PROTECTOR FRAME			CONCRETE
	mm	cm	INCH	SIZE	INTERNAL DEPTH	SIZE	EXTERNAL DEPTH	UNDERSIDE OPENING	WET-POUR CON-PARTS
<b>A</b>	<b>B</b>			<b>C</b>	<b>D</b>	<b>E</b>	<b>F</b>	<b>G</b>	INCLUDED

## 12" Skimmer and Access Cover Kit (same size, same kit)

HSL12-0.4	8-11	1	3/8" - 1/2"	11 3/4" sq.	1/2"	12" sq.	7/8"	10" sq.	not suited
HSL12-0.8	15-22	2	5/8" - 7/8"		7/8"		1 1/4"		
HSL12-1.2	25-32	3	1" - 1 1/4"		1 1/4"		1 5/8"		
HSL12-1.6	35-42	4	1 3/8" - 1 5/8"		1 5/8"		2"		
HSL12-2	45-52	5	1 3/4" - 2"		2"		2 1/2"		
HSL12-2.5	55-62	6	2 1/4" - 2 1/2"		2 1/2"		3"		yes

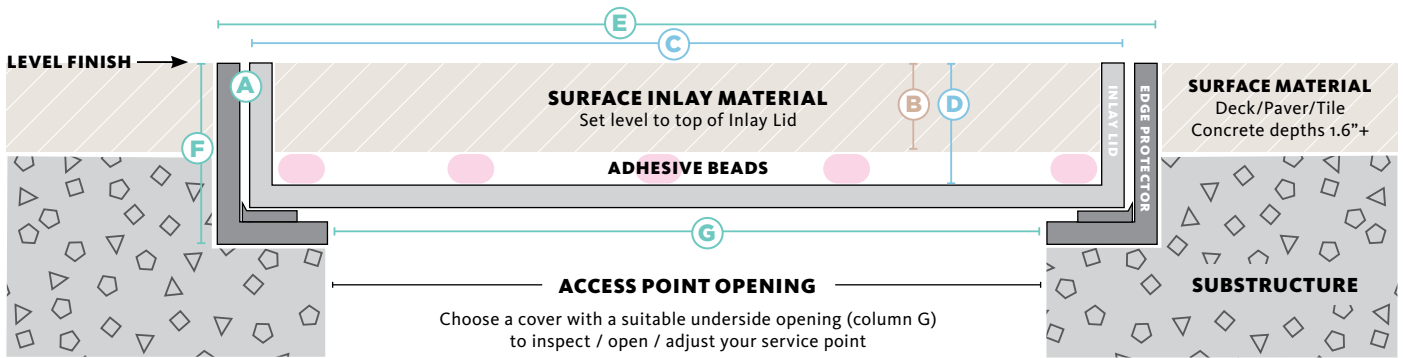
# DRAIN COVER SIZES



## 12.5" Drain Cover Kit

HIDE KIT PRODUCT ORDER CODE	MATERIAL THICKNESS			INLAY LID		EDGE PROTECTOR FRAME			CONCRETE
	mm	cm	INCH	SIZE	INTERNAL DEPTH	SIZE	EXTERNAL DEPTH	UNDERSIDE OPENING	WET-POUR CON-PARTS
<b>A</b>	<b>B</b>			<b>C</b>	<b>D</b>	<b>E</b>	<b>F</b>	<b>G</b>	INCLUDED
HDC12.5-0.4	8-11	1	3/8" - 1/2"	12" sq.	1/2"	12 1/4" sq.	7/8"	10 1/4" sq.	not suited
HDC12.5-0.8	15-22	2	5/8" - 7/8"		7/8"		1 1/4"		
HDC12.5-1.2	25-32	3	1" - 1 1/4"		1 1/4"		1 5/8"		
HDC12.5-1.6	35-42	4	1 3/8" - 1 5/8"		1 5/8"		2"		yes

# ACCESS COVER SIZES



HIDE KIT PRODUCT ORDER CODE	MATERIAL THICKNESS			INLAY LID		EDGE PROTECTOR FRAME			CONCRETE
	mm	cm	INCH	SIZE	INTERNAL DEPTH	SIZE	EXTERNAL DEPTH	UNDERSIDE OPENING	WET-POUR CON-PARTS

## 6" Access Cover Kit

A	B			C	D	E	F	G	INCLUDED
HAC6-0.4	8-11	1	3/8" - 1/2"	5 3/4"sq.	1/2"	6"sq.	7/8"	4 1/3"sq.	not suited
HAC6-0.8	15-22	2	5/8" - 7/8"		7/8"		1 1/4"		
HAC6-1.2	25-32	3	1" - 1 1/4"		1 1/4"		1 5/8"		
HAC6-1.6	35-42	4	1 3/8" - 1 5/8"		1 5/8"		2"		
HAC6-2	45-52	5	1 3/4" - 2"		2"		2 1/2"		
HAC6-2.5	55-62	6	2 1/4" - 2 1/2"		2 1/2"		3"		yes

## 8" Access Cover Kit

HAC8-0.4	8-11	1	3/8" - 1/2"	7 3/4"sq.	1/2"	8"sq.	7/8"	6 3/8"sq.	not suited
HAC8-0.8	15-22	2	5/8" - 7/8"		7/8"		1 1/4"		
HAC8-1.2	25-32	3	1" - 1 1/4"		1 1/4"		1 5/8"		
HAC8-1.6	35-42	4	1 3/8" - 1 5/8"		1 5/8"		2"		
HAC8-2	45-52	5	1 3/4" - 2"		2"		2 1/2"		
HAC8-2.5	55-62	6	2 1/4" - 2 1/2"		2 1/2"		3"		yes

## 10" Access Cover Kit

HAC10-0.4	8-11	1	3/8" - 1/2"	9 3/4"sq.	1/2"	10"sq.	7/8"	9"sq.	not suited
HAC10-0.8	15-22	2	5/8" - 7/8"		7/8"		1 1/4"		
HAC10-1.2	25-32	3	1" - 1 1/4"		1 1/4"		1 5/8"		
HAC10-1.6	35-42	4	1 3/8" - 1 5/8"		1 5/8"		2"		
HAC10-2	45-52	5	1 3/4" - 2"		2"		2 1/2"		
HAC10-2.5	55-62	6	2 1/4" - 2 1/2"		2 1/2"		3"		yes

## 12" Skimmer and Access Cover Kit (same size, same kit)

HSL12-0.4	8-11	1	3/8" - 1/2"	11 3/4"sq.	1/2"	12"sq.	7/8"	10"sq.	not suited
HSL12-0.8	15-22	2	5/8" - 7/8"		7/8"		1 1/4"		
HSL12-1.2	25-32	3	1" - 1 1/4"		1 1/4"		1 5/8"		
HSL12-1.6	35-42	4	1 3/8" - 1 5/8"		1 5/8"		2"		
HSL12-2	45-52	5	1 3/4" - 2"		2"		2 1/2"		
HSL12-2.5	55-62	6	2 1/4" - 2 1/2"		2 1/2"		3"		yes

## 20" Access Cover Kit

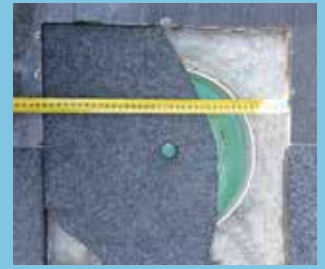
HAC20-0.8	15-22	2	5/8" - 7/8"	19 3/4"sq.	7/8"	20"sq.	1 1/4"	18"sq.	not suited
HAC20-1.2	25-32	3	1" - 1 1/4"		1 1/4"		1 5/8"		

## 26" Access Cover Kit

HAC26-0.8	15-22	2	5/8" - 7/8"	25 3/4"sq.	7/8"	26"sq.	1 1/4"	24"sq.	not suited
HAC26-1.2	25-32	3	1" - 1 1/4"		1 1/4"		1 5/8"		

By avoiding hazardous plastic covers and substandard brittle loose stone covers like these, you will prevent costly follow-up services and replacement difficulties.

HIDE Covers protected your chosen inlay with marine grade stainless steel.



Traditional skimmer lid options have plenty of quality and safety concerns, which can cause serious headaches for homeowners and contractors alike. What's worse, is that many don't even meet relevant Pool Safety Standards!

### CARE & MAINTENANCE & SAFE OPERATION



- Stainless Steel requires cleaning.
- Keep Acid away from Stainless Steel.
- 10-Year Warranty

### INSTALLATION

HIDE Covers are readily installed in new landscapes or when refurbishing.

The simple design allows for easy and affordable installation, on-site by a contractor.

Every kit contains all the components for a no-fuss assembly, resulting in a superior finish. Just add your chosen inlay material and match grout lines and patterns through the lid.



Instrucciones De Instalacion



Installation English

### SAFETY KEY

- The Safety Key easily operates all HIDE lids & covers.
- Key is heavy duty, welded and constructed from marine grade stainless steel.
- Keep it out of reach of children.



### LANDSCAPERS AND HOMEOWNERS EMBRACE HIDE SKIMMER COVERS

Seamless installation, lasting satisfaction: Landscapers rave about HIDE Skimmer Covers!

Experience effortless installation and unmatched quality while homeowners rejoice in peace of mind and enduring elegance.

Say goodbye to loose stone covers for good!



#### HEAD OFFICE

26 Link Drive, Yatala, Qld, 4207, Australia

Phone: +61 7 3807 2551

Email: admin@skimmercovers.com



Scan to contact your local North American sales manager



@hideskimmerlids



Patents: USA/Canada: www.skimmercovers.com (under technical)

