



 **ELEGANCE**

**OUTDOOR PORCELAIN**  
**2023 Collection**



OUTDOOR SPIRIT,  
RESISTANCE AND VERSATILITY:  
THESE ARE JUST A FEW OF THE FEATURES  
OF 20 MM THICK PORCELAIN  
STONEWARE.



PORCELAIN 2CM PAVER is ideal for public and private outdoor flooring and stands out for its exceptional technical performance.

A perfectly square and monocaliber porcelain stoneware slab with a 20 mm thickness that features surface finishes with high antislip performance (R11 A+B+C), with a wide range of special pieces that create visual continuity between indoor and outdoor spaces, making them perfect for swimming pools and wellness centres.



## BENEFITS



**HIGH RESISTANCE TO BREAKING LOADS AND STRESS**



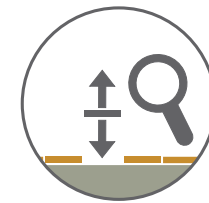
**HIGH NON-SLIP PERFORMANCE: R11 A+B+C**



**EASY TO CLEAN**



**HIGH RESISTANCE TO FROST AND FIRE**



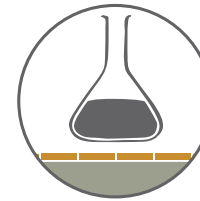
**EASY TO INSTALL, REMOVE AND REPOSITION \***



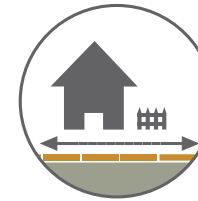
**RESISTANCE TO THE WEATHERING ELEMENTS AND THERMAL SHOCK**



**RESISTANCE TO SALT AND INALTERABILITY OVER TIME**



**RESISTANT TO ACIDS**

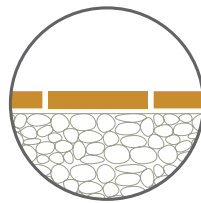


**PERFECT CONTINUITY BETWEEN INDOOR AND OUTDOOR AREAS**

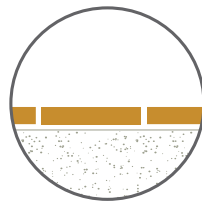


**REUSABLE**

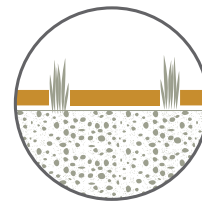
□ IT DOES NOT REQUIRE A SPECIALIZED TILE LAYER (IN CASE OF DRY INSTALLATION) NEITHER THE USE OF GLUES AND GROUTS (IN CASE OF DRY OR RAISED INSTALLATION)



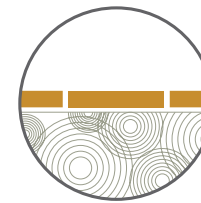
**DRY INSTALLATION ON GRAVEL**



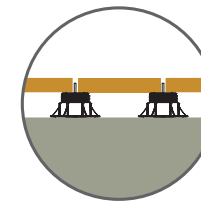
**DRY INSTALLATION ON SAND**



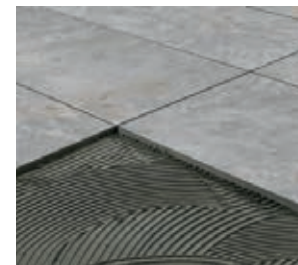
**DRY INSTALLATION ON GRASS**



**TRADITIONAL INSTALLATION ON SCREEDS**



**RAISED INSTALLATION ON SUPPORTS**



## INTENDED USES

PORCELAIN 2CM PAVER'S MAIN FEATURES MAKE IT THE IDEAL SOLUTION FOR ANY TYPE OF PUBLIC AND PRIVATE

OUTDOOR FLOORING. PORCELAIN 2CM PAVER REPRESENTS THE BEST SOLUTION FOR:

- WALKWAYS IN GARDENS OR ON BEACHES
- TERRACES AND BALCONIES

- PATIOS, COURTYARDS, SWIMMING POOL EDGES, AND WELLNESS CENTRES
- DRIVE-OVER PATHWAYS

# COLORS

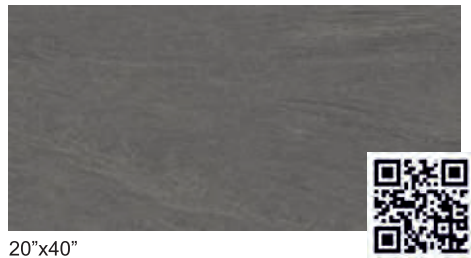
20"X40"

WHITE



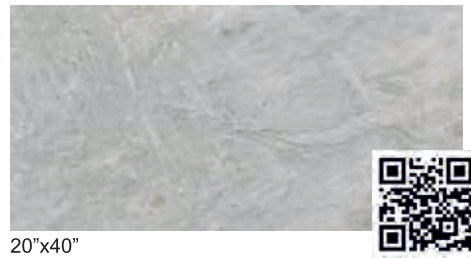
20"x40"

SMOKEY



20"x40"

MOON



20"x40"

DESERT



20"x40"

DUST



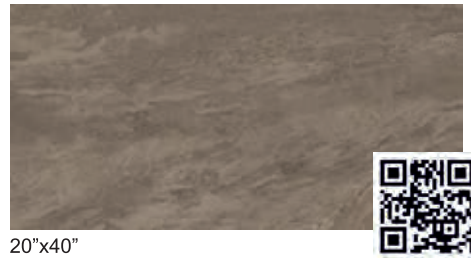
20"x40"

DARK



20"x40"

SUNSET



20"x40"

ALPINE



20"x40"

SAND



20"x40"

SILVER



20"x40"

MARS



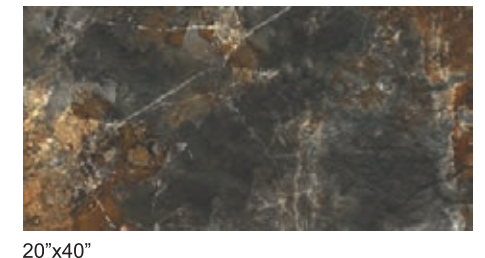
20"x40"

MINERAL



20"x40"

FOSSIL



20"x40"





WHITE





MOON





DUST



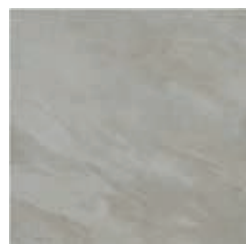
# COLORS

# MODULAR PATTERN 4 SIZES

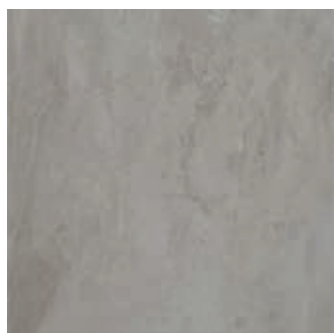
## SANDSTONE RECTIFIED



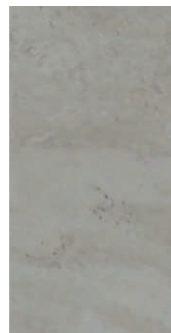
18"x36"



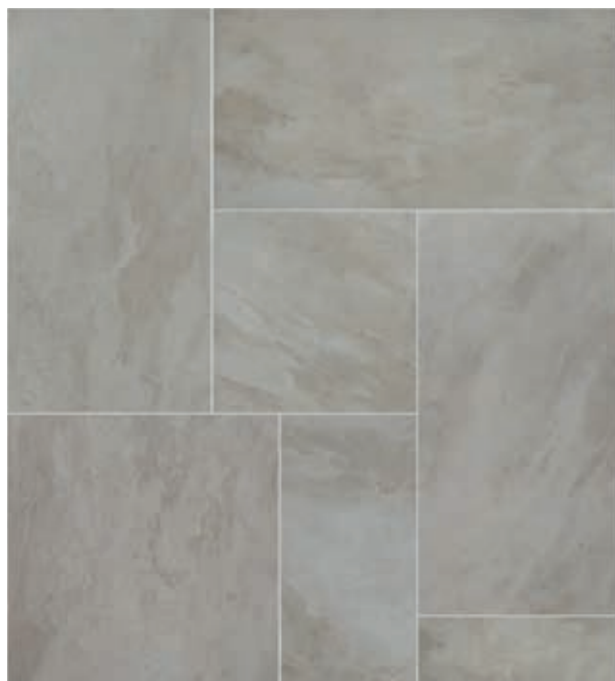
18"x18"



24"x24"

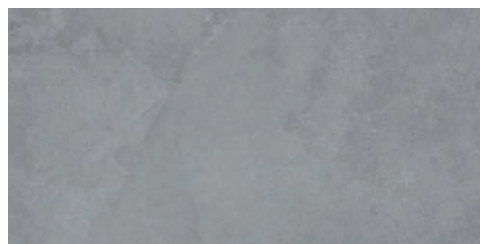


12"x24"

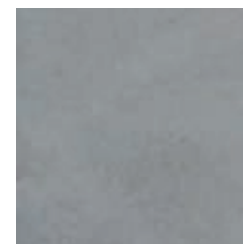


Modular Pattern

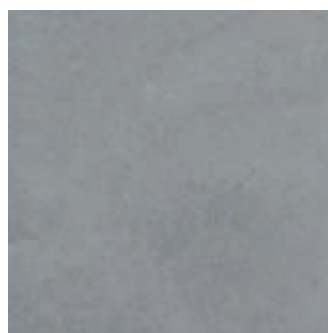
## ASH RECTIFIED



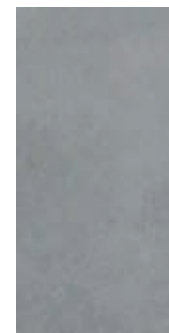
18"x36"



18"x18"



24"x24"



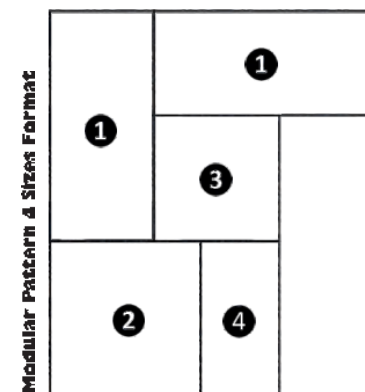
12"x24"



Modular Pattern

### 1 set include:

- ❶ 18"x36"x3/4" (2pcs) = 52.17%
- ❷ 24"x24"x3/4" (1pc) = 23.18%
- ❸ 18"x18"x3/4" (1pc) = 13.04%
- ❹ 12"x24"x3/4" (1pc) = 11.60%







ASH



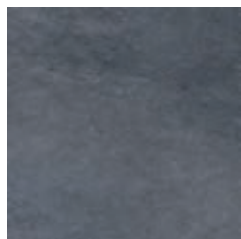
# COLORS

# MODULAR PATTERN 4 SIZES

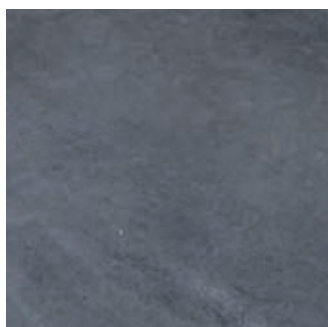
## COAL RECTIFIED



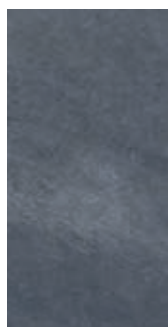
18"x36"



18"x18"



24"x24"

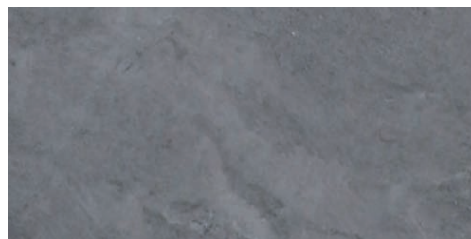


12"x24"

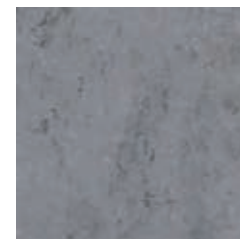


Modular Pattern

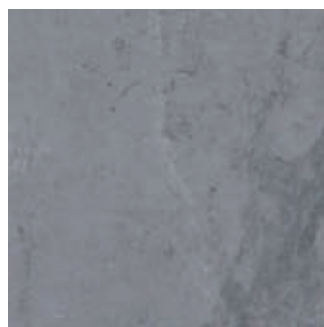
## METAL RECTIFIED



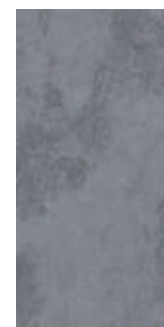
18"x36"



18"x18"



24"x24"



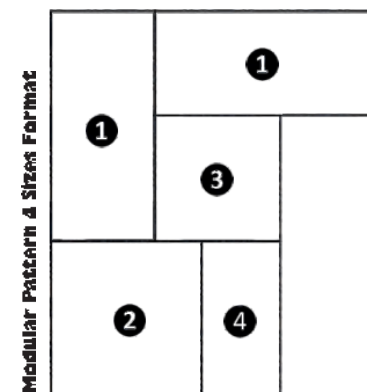
12"x24"



Modular Pattern

### 1 set include:

- ❶ 18"x36"x3/4" (2pcs) = 52.17%
- ❷ 24"x24"x3/4" (1pc) = 23.18%
- ❸ 18"x18"x3/4" (1pc) = 13.04%
- ❹ 12"x24"x3/4" (1pc) = 11.60%



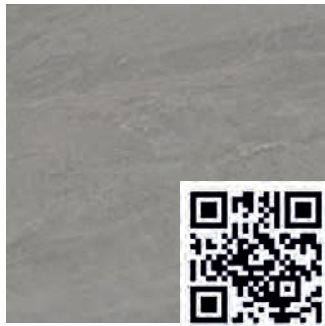






# COLORS 24"X24"

**LIGHT GREY**



24"x24"

**DARK GREY**



24"x24"

**BLUESTONE**



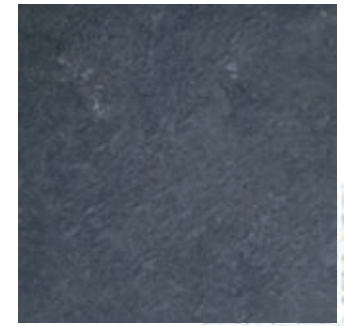
24"x24"

**ASH**



24"x24"

**COAL**



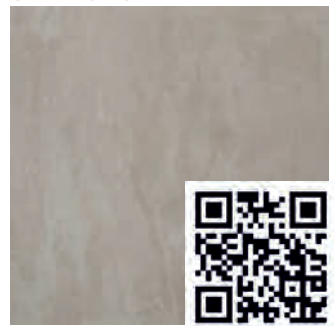
24"x24"

**METAL**



24"x24"

**SANDSTONE**



24"x24"

**SOFT CREAM**



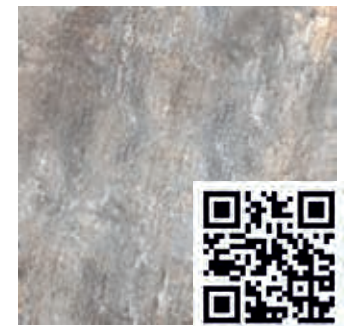
24"x24"

**PIETRA GREY**



24"x24"

**RUSTIC GRIGIO**



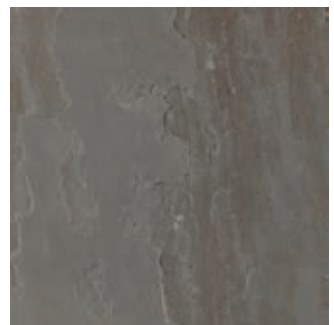
24"x24"

**POCONO**



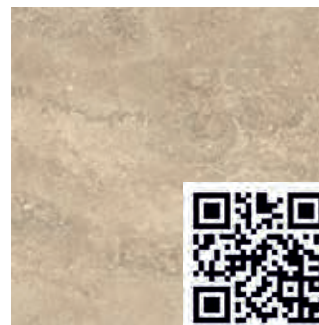
24"x24"

**FORGE**



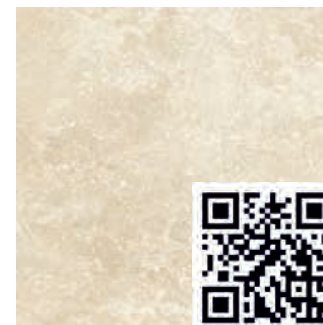
24"x24"

**CARAMEL**



24"x24"

**HONEY**



24"x24"

**MILK**



24"x24"



# COLORS 24"X24"

**STORM**



24"x24"

**NEST**



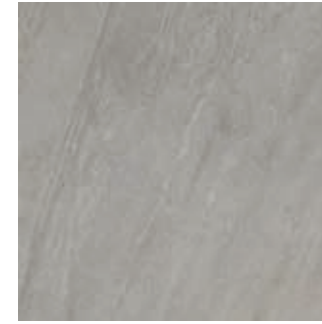
24"x24"

**BURNT**



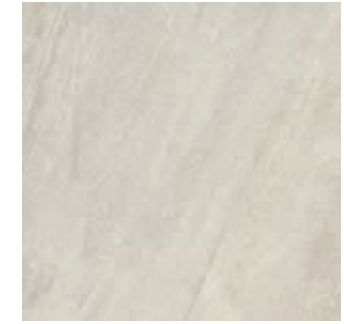
24"x24"

**ROCKY**



24"x24"

**FLAKE**



24"x24"

**PHILLY GRAY**



24"x24"

**PHILLY TAUPE**



24"x24"

IN STOCK IN ITALY

**PHILLY WHITE**



24"x24"

**PHILLY BEIGE**



24"x24"

**URBAN WHITE**



24"x24"

**BASALTO GREY**



24"x24"

IN STOCK IN ITALY

**BASALTO RED**



24"x24"

IN STOCK IN ITALY

**BASALTO BLACK**



24"x24"

IN STOCK IN ITALY





METAL





SOFT CREAM & SUNSET



# COLORS CEMENT LOOK

## 32"X32"

**ANTRACITE**



Rectified 32"x32"

**GRIGIO**



Rectified 32"x32"

**AVORIO**



Rectified 32"x32"



**INOX**



**SPACE DARK**

IN STOCK IN ITALY



Rectified 32"x32"



**AVORIO** 32"X32"



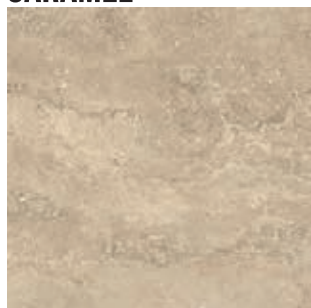


INOX



# COLORS CONCRETE LOOK 40"X40"

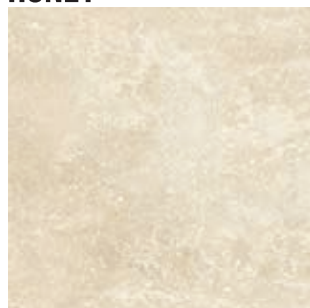
**CARAMEL**



40"X40"

IN STOCK IN ITALY

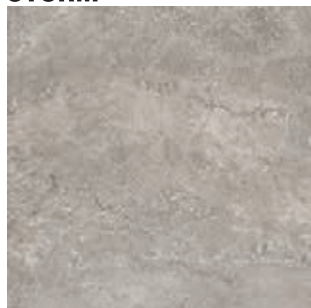
**HONEY**



40"X40"

IN STOCK IN ITALY

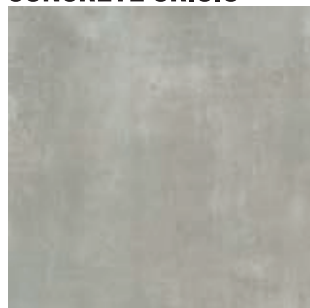
**STORM**



40"X40"

IN STOCK IN ITALY

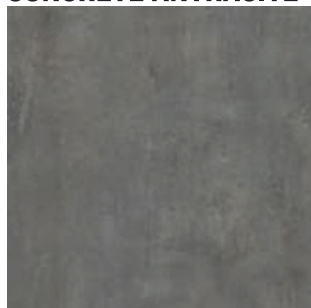
**CONCRETE GRIGIO**



40"X40"

IN STOCK IN ITALY

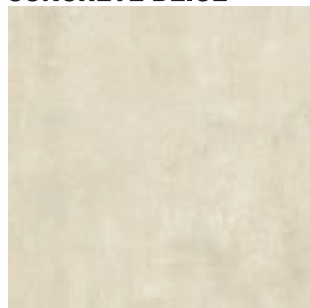
**CONCRETE ANTRACITE**



40"X40"

IN STOCK IN ITALY

**CONCRETE BEIGE**



40"X40"

IN STOCK IN ITALY









## COLORS

# WOODTIME

### CARPINO



16"x48"



8"x48"

### ROVERE IMPERO



16"x48"



8"x48"

### ROVERE SABBIA



16"x48"



8"x48"







# COLORS

## MODULAR PATTERN 3 SIZES

1 set is 18 sq ft:

- ❶ 24"x36"x3/4" (2pcs) = 66.67%
- ❷ 24"x24"x3/4" (1pc) = 22.22%
- ❸ 12"x24"x3/4" (1pc) = 11.11%

Modular Pattern 3 Sizes Format



### DARK GREY



12"x24"



24"x24"



24"x36"

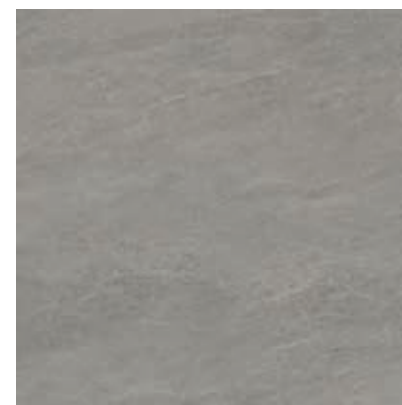


Modular Pattern

### LIGHT GREY



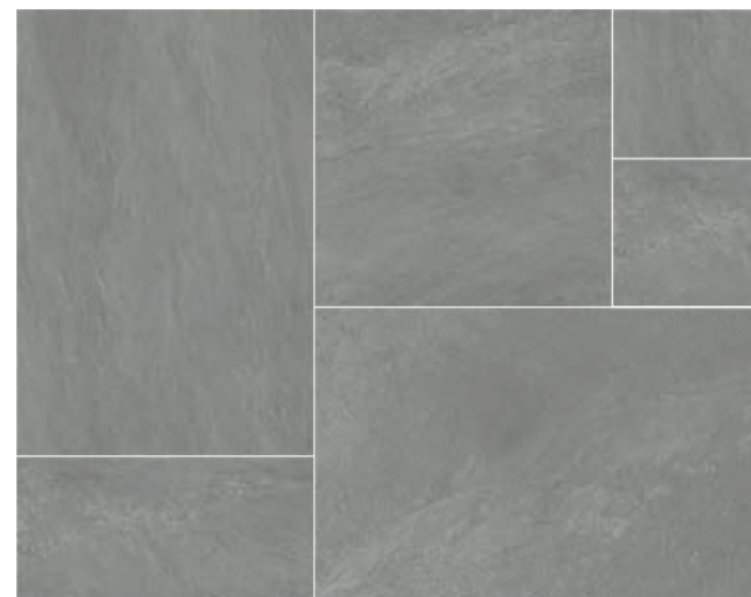
12"x24"



24"x24"



24"x36"



Modular Pattern



# COLORS

# MODULAR PATTERN 3 SIZES

1 set is 18 sq ft:

- ❶ 24"x36"x3/4" (2pcs) = 66.67%
- ❷ 24"x24"x3/4" (1pc) = 22.22%
- ❸ 12"x24"x3/4" (1pc) = 11.11%

Modular Pattern 3 Sizes Format



## HONEY



12"x24"



24"x24"



24"x36"



Modular Pattern



## CARAMEL



12"x24"



24"x24"



24"x36"



Modular Pattern





# COLORS

# MODULAR PATTERN 3 SIZES

1 set is 18 sq ft:

- ❶ 24"x36"x3/4" (2pcs) = 66.67%
- ❷ 24"x24"x3/4" (1pc) = 22.22%
- ❸ 12"x24"x3/4" (1pc) = 11.11%

Modular Pattern 3 Sizes Format



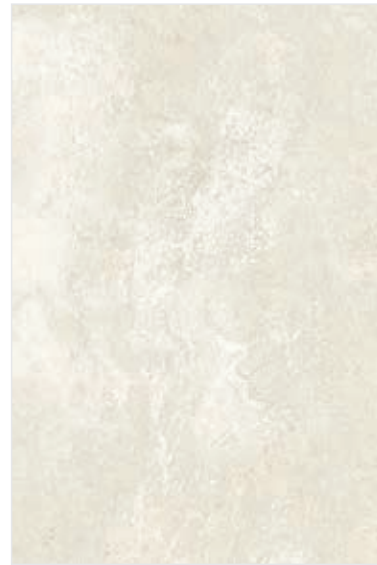
## MILK



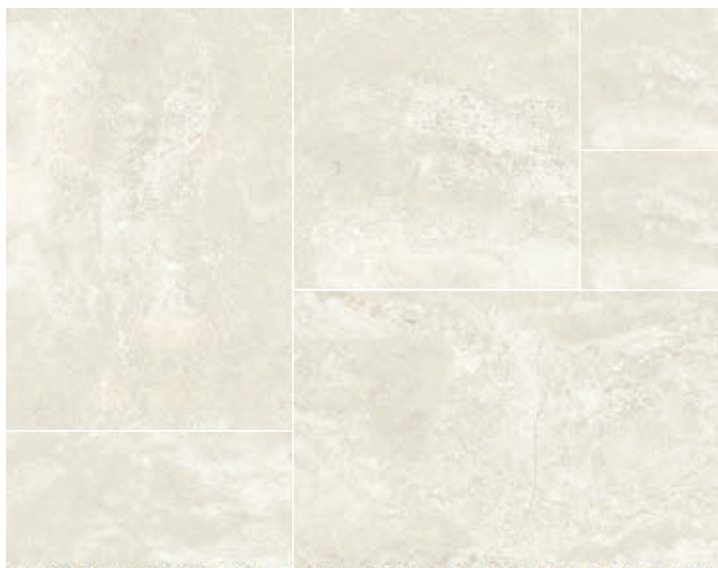
12"x24"



24"x24"



24"x36"



Modular Pattern

## STORM



12"x24"



24"x24"



24"x36"



Modular Pattern





# COLORS

# MODULAR PATTERN 3 SIZES

1 set is 18 sq ft:

- ❶ 24"x36"x3/4" (2pcs) = 66.67%
- ❷ 24"x24"x3/4" (1pc) = 22.22%
- ❸ 12"x24"x3/4" (1pc) = 11.11%

Modular Pattern 3 Sizes Format



## BLUESTONE



12"x24"



24"x24"

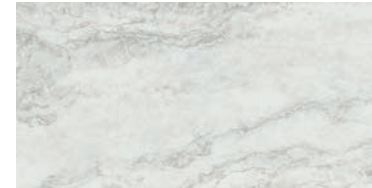


24"x36"



Modular Pattern

## URBAN WHITE



12"x24"



24"x24"



24"x36"



Modular Pattern





**BLUESTONE**





**STORM PORCELAIN PAVER  
IN MODULAR PATTERN**



# COLORS

## 24"X36"

**LIGHT GREY**



24"X36"



**BLUESTONE**



24"X36"

**DARK GREY**



24"X36"

**URBAN WHITE**



24"X36"

**BASALTO GREY**

IN STOCK IN ITALY



24"X36"

**BASALTO RED**

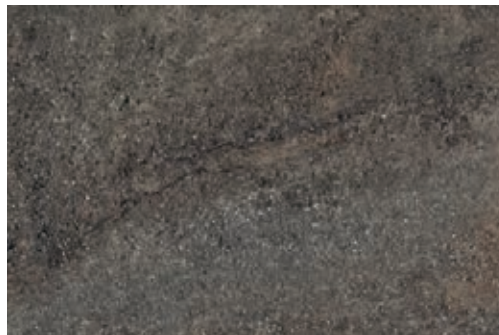
IN STOCK IN ITALY



24"X36"

**BASALTO BLACK**

IN STOCK IN ITALY



24"X36"



**LIGHT GREY**





**DARK GREY**



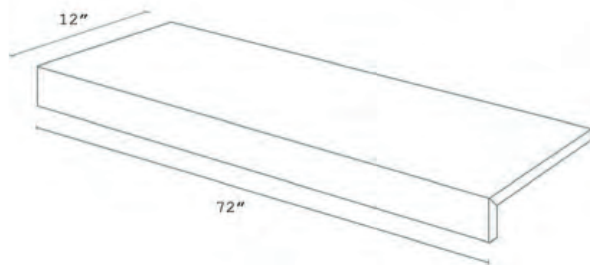
## COLORS

## PORCELAIN COPINGS

### DARK GREY



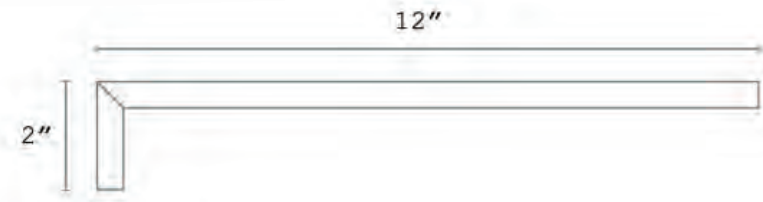
12"x72"x2"



### LIGHT GREY



12"x72"x2"



### HONEY



13"x24"x3/4"



### STORM



13"x24"x3/4"



### MILK



13"x24"x3/4"







IN STOCK  
**DARK GREY**



IN STOCK  
**LIGHT GREY**



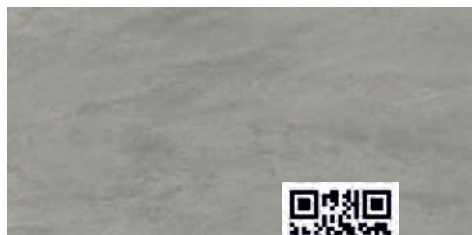
FABRICATED  
IN NJ, USA | **SAND**



# COLORS

## 24"X48"

**LIGHT GREY**



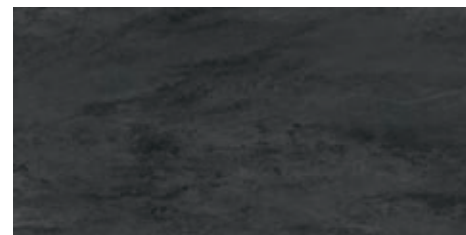
24"x48"

**DARK GREY**



24"x48"

**SLATE**



**IN STOCK IN ITALY**

24"x48"

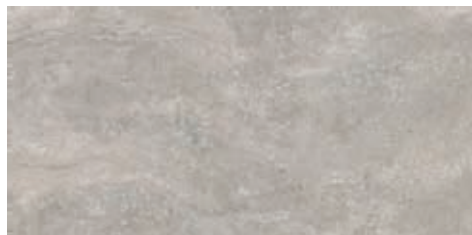
**TAUPE**



**IN STOCK IN ITALY**

24"x48"

**STORM**



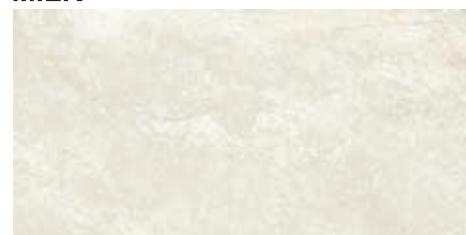
24"x48"

**CARMEL**



24"x48"

**MILK**



24"x48"

**HONEY**



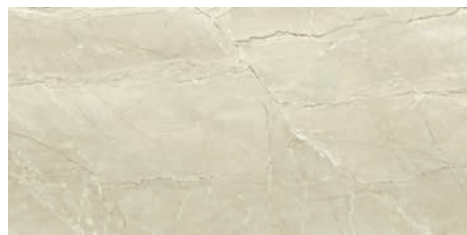
24"x48"

**ROMANTIC WHITE**



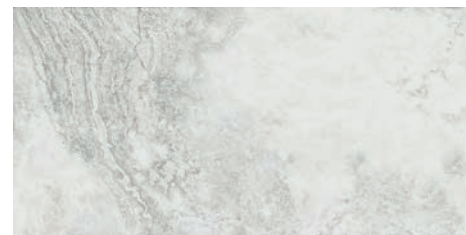
24"x48"

**ROMANTIC BEIGE**



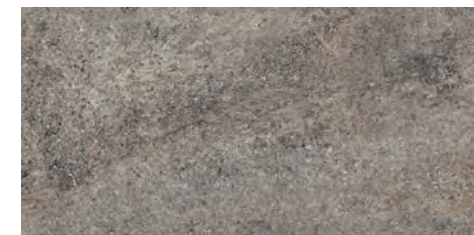
24"x48"

**URBAN WHITE**



24"x48"

**BASALTO GREY**



**IN STOCK IN ITALY**

24"x48"

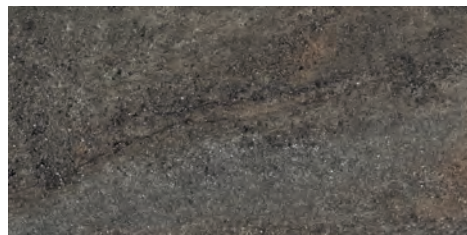
**BASALTO RED**



**IN STOCK IN ITALY**

24"x48"

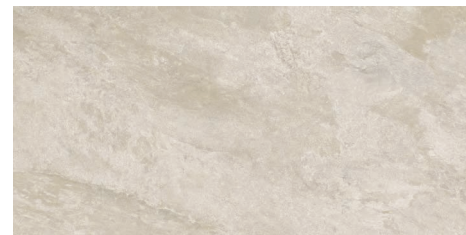
**BASALTO BLACK**



**IN STOCK IN ITALY**

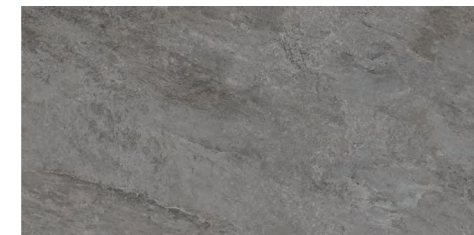
24"x48"

**NEST**



24"x48"

**BURNT**



24"x48"



**ROCKY**



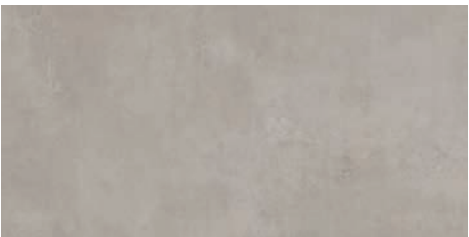
24"x48"

**FLAKE**



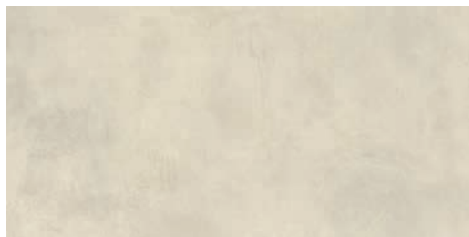
24"x48"

**PHILLY GREY**



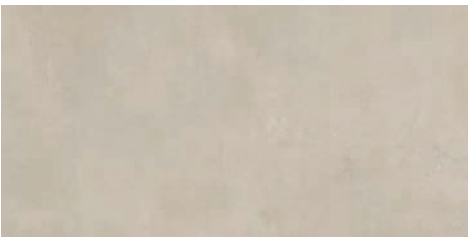
24"x48"

**PHILLY WHITE**



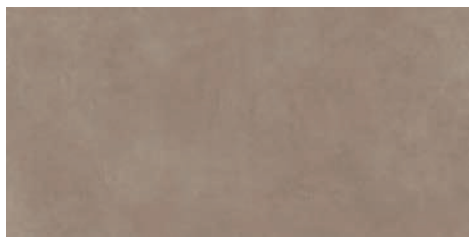
24"x48"

**PHILLY BEIGE**



24"x48"

**PHILLY TAUPE**



24"x48"

IN STOCK IN ITALY



**DARK GREY**



# COLORS

24"X72"

DARK GREY



24"x72"

LIGHT GREY



24"x72"



LIGHT GREY





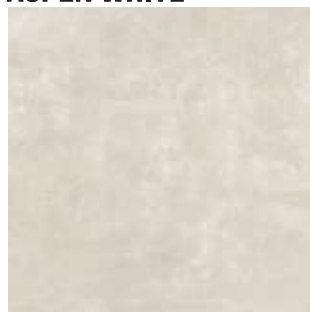
24"X72" LIGHT GREY



# COLORS

## 48"X48"

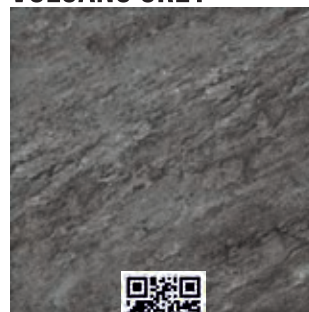
**ASPEN WHITE**



48"x48"

IN STOCK

**VOLCANO GREY**

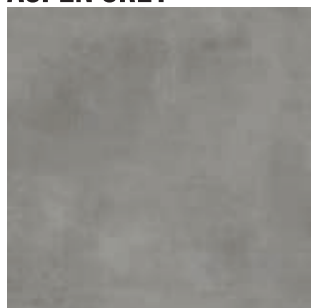


48"x48"



IN STOCK

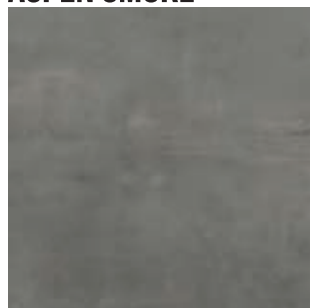
**ASPEN GREY**



48"x48"

IN STOCK IN ITALY

**ASPEN SMOKE**



48"x48"

IN STOCK IN ITALY

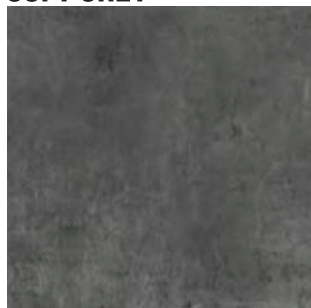
**SOFT ASH**



48"x48"

IN STOCK IN ITALY

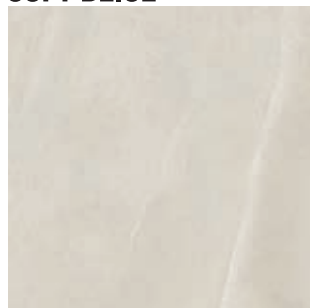
**SOFT GREY**



48"x48"

IN STOCK IN ITALY

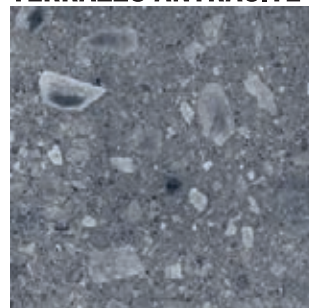
**SOFT BEIGE**



48"x48"

IN STOCK IN ITALY

**TERRAZZO ANTRACITE**



48"x48"

IN STOCK IN ITALY

**TERRAZZO GREY**



48"x48"

IN STOCK IN ITALY

**TERRAZZO WHITE**



48"x48"

IN STOCK IN ITALY



**ASPEN WHITE**





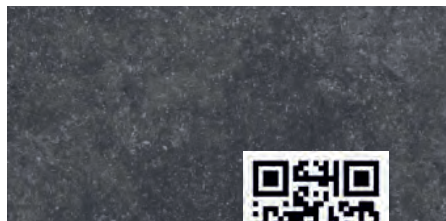
**VOLCANO GREY**



## COLORS

## 3CM PORCELAIN PAVERS

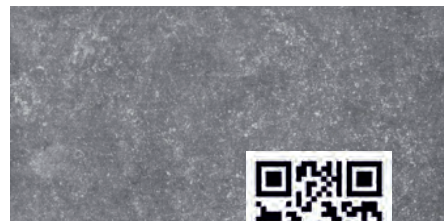
### BLUESTONE DARK



16"x32" - **IN STOCK**,  
24"x24"



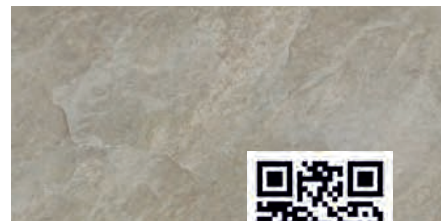
### BLUESTONE GREY



16"x32" - **IN STOCK**,  
24"x24", 36"x36"



### PIETRA BARGE



16"x32" - **IN STOCK**,  
24"x24"



### GRANITO DIORITE



16"x32"

### GRANITO MONTORFANO



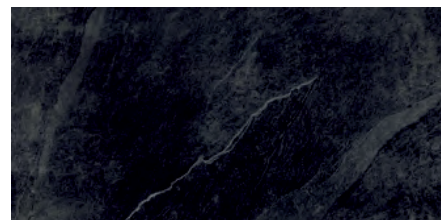
16"x16", 16"x32", 24"x24", 16"x48"

### ZERMATT CHIARO



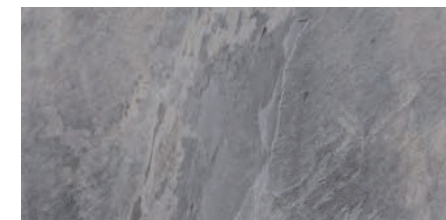
16"x32"

### SLATE BLACK



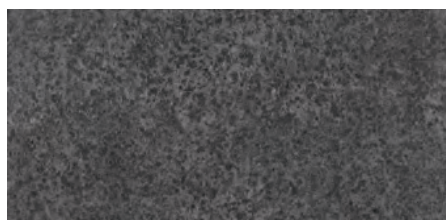
16"x32", 24"x24"

### SLATE GREY



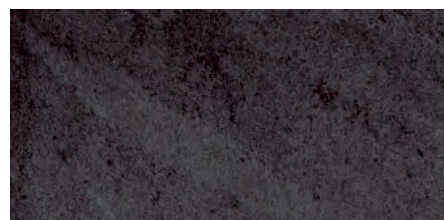
16"x32", 24"x24"

### PIETRA BASALTO



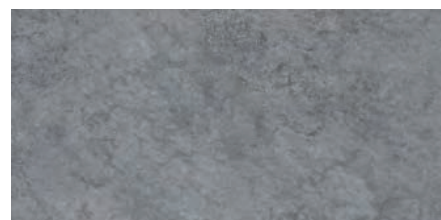
16"x32", 24"x24", 36"x36"

### PIETRA ANTRAZYT



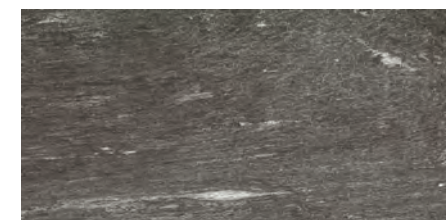
16"x32"

### PIETRA GREY



16"x32"

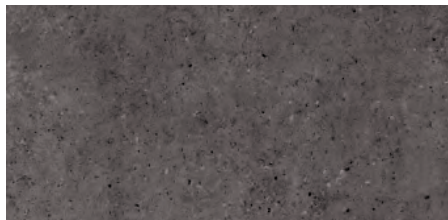
### ZERMATT SCURO



16"x32"

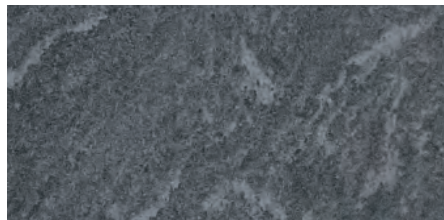


## PIETRA OMBRA



16"x32", 24"x24"

## PIETRA GRIGIONI



16"x32", 24"x24"

## FORESTA SCURO

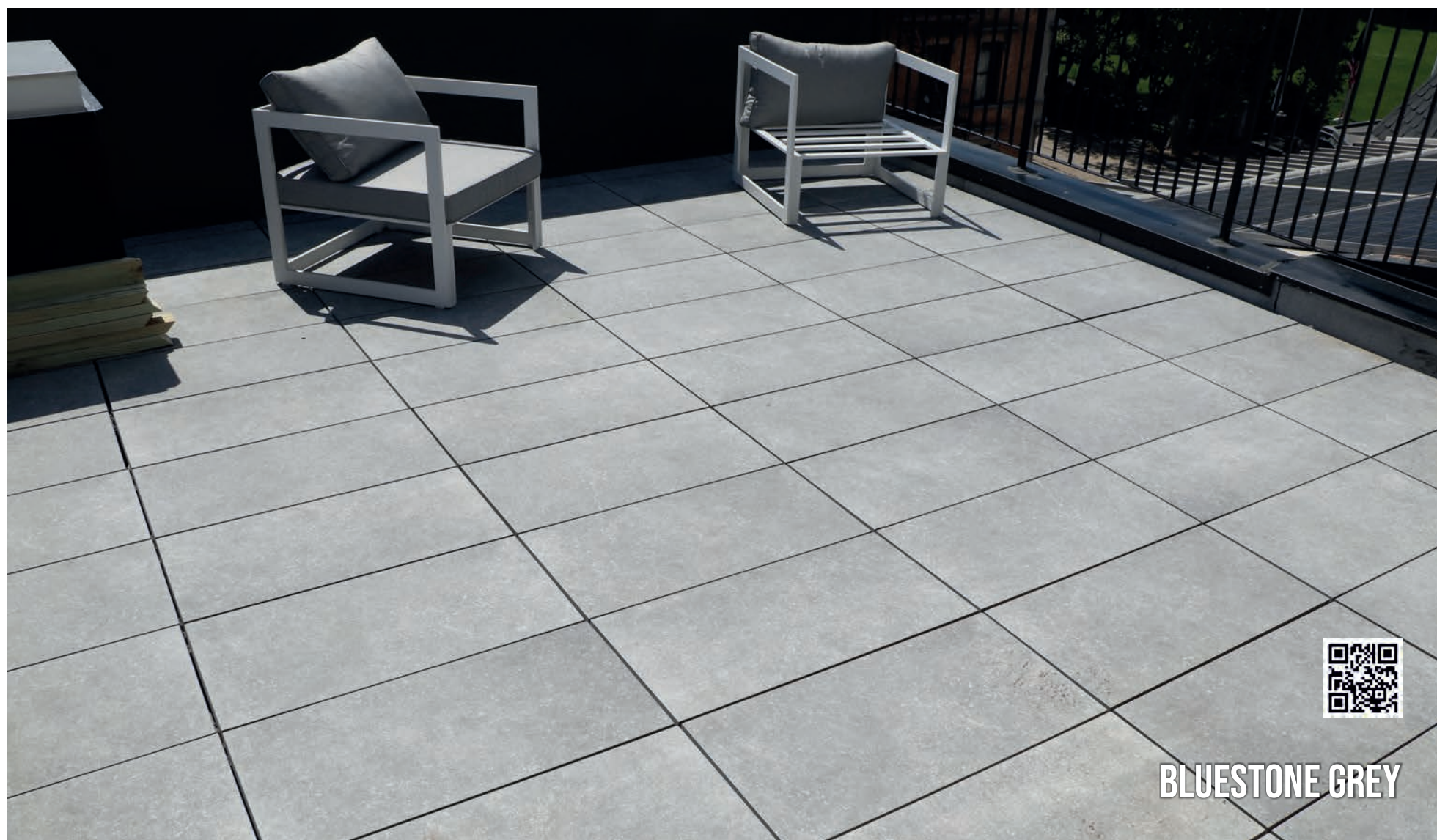


16"x32"

## FORESTA CHIARO



16"x32"



**BLUESTONE GREY**



# COLORS

# PORCELAIN VENEER

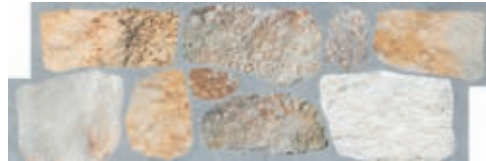


AVORIO



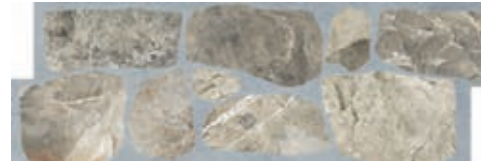
8"x24"

BEIGE



8"x24"

BROWN



8"x24"

GRIGIO



8"x24"



GRIGIO





**DARK**



**WHITE**

**CLAY**

## 3D PORCELAIN LEDGER

**BEIGE**



6"x8"x4"



6"x24"

**TAUPE**



6"x8"x4"



6"x24"

**GREY**



6"x8"x4"

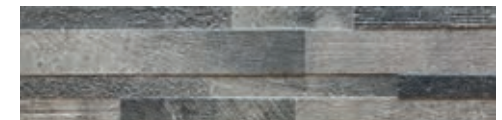


6"x24"

**DARK**



6"x8"x4"



6"x24"

**WHITE**



6"x8"x4"



6"x24"

**INSIDE CORNER**



6"x8"x4"

**SPECIAL ORDER**



# EQ PEDESTALS & ACCESSORY

IN-STOCK

100%  
MADE IN ITALY

- QUICK WATER DRAINAGE
- BETTER THERMAL INSULATION



HEIGHT	EQ3	EQ4	EQ5	EQ6	EQ7
	1 1/7" - 1 3/4"	1 2/3" - 2 5/6"	2 3/4" - 5"	4 7/8" - 9 2/9"	7 1/4" - 13 5/9"



Power Key Ambientata T



EQ Key



EQ Lucky Shims

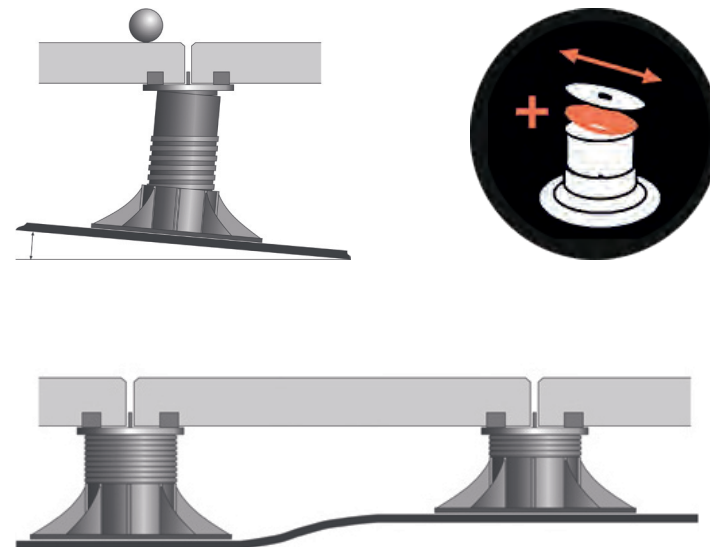


Red EQ Slope Adjuster



## ADVANTAGES:

- EASY INSTALLATION
- EXCELLENT FOR HIDING AND EQUIPMENT
- ALWAYS A FLAT PAVING AND EASILY ACCESSIBLE
- EXCELLENT ABSORPTION OF STRUCTURAL MOVEMENT
- BETTER ACOUSTIC INSULATION
- HIGHLY RESISTANCE
- SIGNIFICANT LESS WEIGHT





# ADJUSTABLE PEDESTALS & ACCESSORY

IN-STOCK

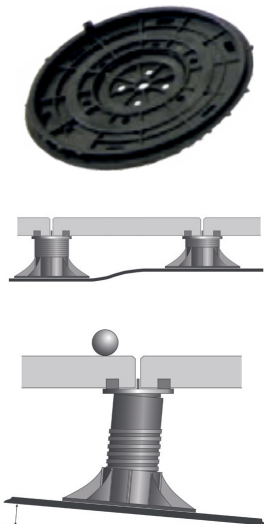
## ADVANTAGES:

- EASY INSTALLATION
- EXCELLENT FOR HIDING AND EQUIPMENT
- ALWAYS A FLAT PAVING AND EASILY ACCESSIBLE
- EXCELLENT ABSORPTION OF STRUCTURAL MOVEMENT
- BETTER ACOUSTIC INSULATION
- HIGHLY RESISTANCE
- SIGNIFICANT LESS WEIGHT
- QUICK WATER DRAINAGE
- BETTER THERMAL INSULATION

PEDCORRECTOR -  
Base slope corrector  
(0%-5% slope adjustable)



	E3	E4	E5	E6	E6.5	E7
HEIGHT	1 1/8" - 1 5/8"	1 9/16" - 2 9/16"	2 3/8" - 4 1/8"	3 1/2" - 7"	7 1/2" - 11"	7" - 12 5/8"
BREAKING LOAD	1200 lbs	1500 lbs	2250 lbs	1450 lbs	1800 lbs	2400 lbs
COMPOSITION	1 base + 1 head (72 pcs/bx) 1 Spacer Tab (400 pcs/bx) 1 Shim (500 pcs/bx)	1 base + 1 head (54 pcs/bx) 1 Spacer Tab (400 pcs/bx) 1 Shim (500 pcs/bx)	1 base + 1 head (48 pcs/bx) 1 Spacer Tab (400 pcs/bx) 1 Shim (500 pcs/bx)	1 base + 1 head (40 pcs/bx) 1 Spacer Tab (400 pcs/bx) 1 Shim (500 pcs/bx)	1 base (48 pcs/bx) 1 head (36 pcs/bx) 1 Spacer Tab (400 pcs/bx) 1 Shim (500 pcs/bx)	1 base (48 pcs/bx) 1 extender (60 pcs/bx) 1 head (72 pcs/bx) 1 Spacer Tab (400 pcs/bx) 1 Shim (500 pcs/bx)







## BEFORE

### ADJUSTABLE HEIGHT:

We have a solution height from 1/8" to 50".

### MATERIAL:

Polypropylene(PP), material thickness 4.5mm-6mm;  
Composition 90% PP, 10% talc, UV and black masterbatch  
100% recyclable

### DIMENSIONS:

Head=diameter 5 7/8" - surface area 27.28 sq.inch  
Base=diameter 7 7/8" - ground surface 48.83 sq.inch  
Extender-extender diameter 4 3/4" - adjustable height

## AFTER

### PERFORMANCE:

Resisting UV rays, weather, sea salt and almost all chemicals.  
Temperature range: -40°F to +248°F (-40°C to +120°C).

### APPLICATION:

Support for outdoor terraces with any kind of material: timber decking, stone, ceramic, composite material, metal, fiberglass grid ... Can be placed on any stable substrate, also over insulation panels.

### SLOPE CORRECTOR FROM 0%-5% :

Slope correctors could compensate ground fall 0%-5%, making ideal levelling surface. It is assembled on the bottom of pedestals. Clients could choose to use it or not with different installing condition.

**FIX COLLAR:** Fix and lock height after adjustment, increase stability

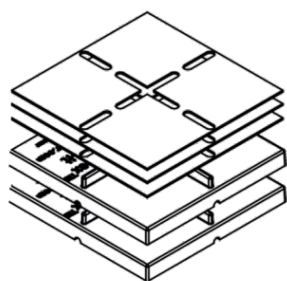
**SHIM:** Anti-slip, reduce impact, absorb shock, compensate floor thickness difference.



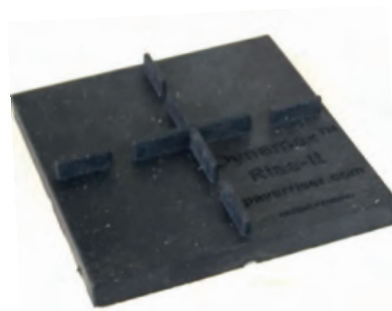
Scan for pedestal  
installation process video



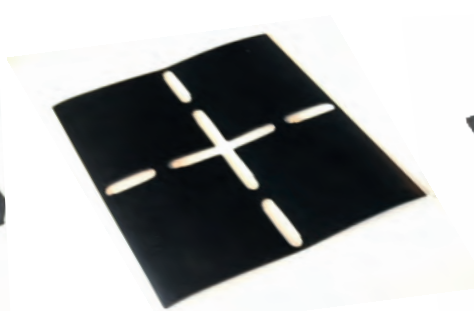
# RISE-IT



Risers can be stacked 3 pcs high with an elevation of 1/2" increments. Up to 4 shims can be used in conjunction in 1/16" increments for optimal levelling.



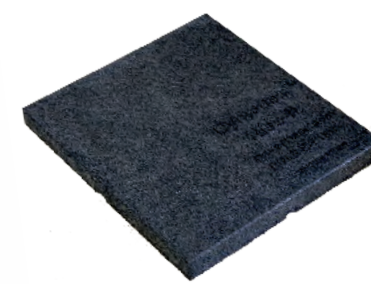
**Rise-it 1/2"**



**Rise-it Shim 1/16"**

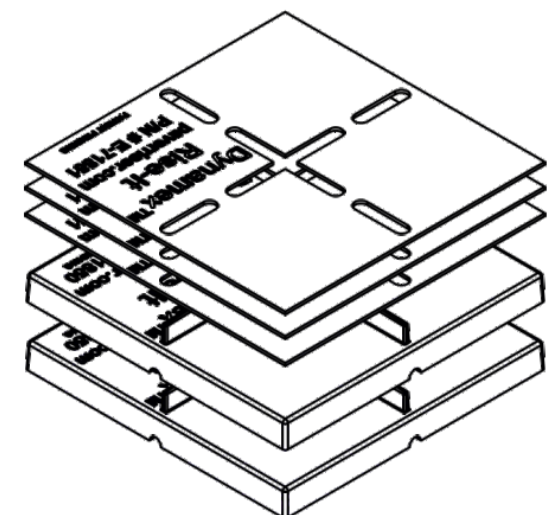
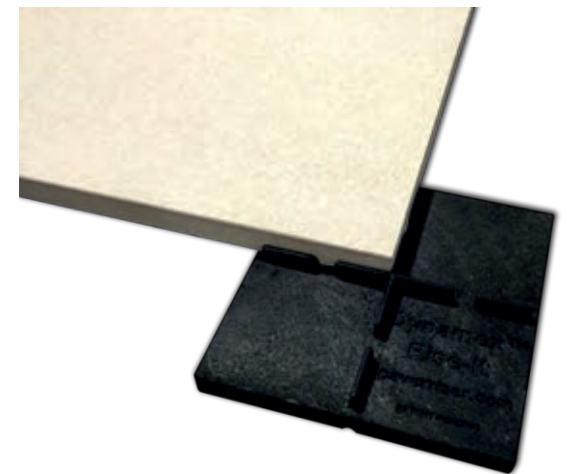


**Rise-it 1/8"**



**Rise-it Flat Top**

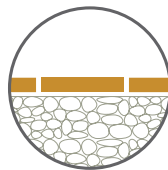








## DRY INSTALLATION ON GRAVEL



THIS TYPE OF INSTALLATION IS RECOMMENDED FOR WALKABLE FLOORS.

PORCELAIN 2CM PAVER IS INSTALLED ON THE SUBSTRATE WITHOUT USING ADHESIVES OR FILLERS, THEREBY

CREATING WALKWAYS THAT CAN BE WALKED ON IMMEDIATELY. INTEGRATED AND ENVIRONMENTALLY-FRIENDLY.

INSTALLATION ON GRAVEL HAS THE ADVANTAGE OF ALLOWING THE DRAINAGE OF RAINWATER.

### INSTALLATION INSTRUCTIONS

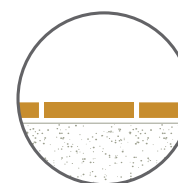
- ∞ LEVEL THE GRAVEL
- ∞ POSITION THE TILE
- ∞ USE CROSS SPACERS







INSTALLATION ON SAND IS PARTICULARLY SUITABLE FOR BEACHES AND LIDOS (ESPECIALLY IN LIGHT COLOURS).



## DRY INSTALLATION ON SAND



### INSTALLATION INSTRUCTIONS

- ∞ LEVEL THE GRAVEL
- ∞ POSITION THE TILE
- ∞ USE CROSS SPACERS







# DRY INSTALLATION ON GRASS

## INSTALLATION INSTRUCTIONS

- ∞ LAY THE TILES BY SPACING THEM DEPENDING ON THE DESIRED AESTHETIC EFFECT AND REMOVE THE GRASSY SURFACE
- ∞ SPILL THE GRAVEL AND SAND STABILISER TO IMPROVE THE TIGHTNESS OF THE SUBSTRATE
- ∞ POSITION THE TILE











## TRADITIONAL INSTALLATION ON SCREEDS \*



THE EXTRAORDINARY  
RESISTANCE OF THIS 20  
MM FINE PORCELAIN

STONEWARE MEANS  
PORCELAIN 2CM  
PAVER, LAID WITH

THE TRADITIONAL  
TECHNIQUE ON  
SCREEDS, IS THE IDEAL

SOLUTION ALSO FOR  
PAVING DRIVEWAYS.



PLEASE CHECK THE SUPPORT CAPACITY AND QUALITY OF THE LAYING  
SURFACE BEFORE INSTALLING THE TILES.  
LASTLY, A MINIMUM SLOPE IS ADVISED OF 1.5%.

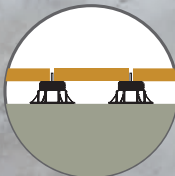
### INSTALLATION INSTRUCTIONS

- ∞ SPREAD THE ADHESIVE EVENLY  
USING THE DOUBLE COATING  
TECHNIQUE (BOTH ON THE  
SUBSTRATE AND ON THE BACK  
OF THE TILE)
- ∞ POSITION THE TILE
- ∞ USE CROSS SPACERS  
(5 MM JOINTS)
- ∞ GROUT THE FLOOR
- ∞ CLEAN THE SURFACE  
THOROUGHLY



THIS TYPE OF INSTALLATION REQUIRES OPTIMAL COPLANARITY OF THE SCREED,  
DOUBLE LAYER OF ADHESIVE, AND 5 MM JOINTS BETWEEN THE SLABS.





PORCELAIN 2CM PAVER IS THE PERFECT SOLUTION FOR OUTDOOR FLOATING INSTALLATIONS OVER 3 DIFFERENT TYPES OF POLYPROPYLENE LOAD BEARING SUBSTRATES.

THESE TILES ARE QUICK AND EASY TO INSTALL AND REMOVE AND CAN BE WALKED ON IMMEDIATELY.



## INSTALLATION INSTRUCTIONS

- ∞ YOU ARE ADVISED TO CHECK THE SUPPORT CAPACITY AND QUALITY OF THE LAYING SURFACE BEFORE INSTALLING THE TILES. A MINIMUM SLOPE IS ADVISED OF 1.5%
- ∞ LAY THE TILES ON THE SUPPORTS PREVIOUSLY ARRANGED
- ∞ CHECK THE COPLANARITY AND LEVELLING OF THE SURFACE
- ∞ USE THE ADJUSTMENT KEY IF NECESSARY



# RAISED INSTALLATION ON SUPPORT









IN STOCK  
**LIGHT GREY**



## CUSTOM COPINGS & DRAINS

## CUSTOM FABRICATION IN TWO WEEKS IN NEW JERSEY



Single Bullnose Coping Project



Double Bullnose Coping Project



Mitered steps and custom drains





# OUTDOOR PORCELAIN PAVER CLEANING GUIDE

## FIRST FLOOR DEEP CLEANING AFTER INSTALLATION OVER CONCRETE

After Grouting the Joints (pic. 1) It is important to remove the excess grout with a sponge and clear water (pic. 2). After 12/48 hours, the grout in the joints will have "set up" /hardened significantly. There will be a noticeable residual "haze". Typically, a diluted acid cleaner specifically for removing "Grout Haze", combined with a soft scrubbing pad will remove the majority if not all the "Haze". Change your acid/water solution frequently for best results. It is also recommended to keep a bucket of clean water to remove the acid/water solution. It is recommended to keep and use clean dry towels to help remove as much residual water and keep the floor as dry as possible. Please refer to the cleaning chemical company's suggested methods and dilution rates. (pic. 3). For areas with excess grout or grout that becomes adhered to the face of the tile, further cleaning with an Acid/ Water Solution may be necessary. Please refer to the Cleaning Chemical Company's instructions as not all acids or chemicals are the same. The excess grout residue (pic. 4-5) must be removed so that it does not dry and stick on the surface. It is necessary to change the cleaning water frequently and rinse well. Care must be taken on inlayed, polished and especially Anti Slip products similar to Elegance. The use of a floor-washing machine combined with the use of a diluted acid detergent helps reach the spaces between adjacent tiles and clean them properly. If such a cleaning procedure is not carried out, or if such cleaning is carried out too late, the grout residue creates an absorbent film, which holds dirt, making the surface difficult to clean: in this case, Elegance by NT Trading will not be liable for any damage caused to the surface.

## ORDINARY CLEANING

Ordinary maintenance must be carried out using specialized detergents to remove stains but these detergents must not leave a wax, film or membrane residue. Rinsing well with plenty of clean water is a fundamental part of the cleaning procedure, therefore we advise against the use of products which state that they "do not need rinsing".

## OTHER RECOMMENDATIONS

Bright colored products, in particular white and extra-white tiles, are very delicate and, although for all intent and purpose are hygienically clean, However, they can get dirty more easily than darker tiles. It is therefore necessary to remember that these particular products require careful regular maintenance. Sealers are unnecessary, especially in the case of our **Elegance** Product line. Sealing will change the D.C.O.F. (Dynamic Co-efficient of Friction) resulting in a surface that will become more slippery. Also because Porcelain has such a low absorption the sealer will unlikely stick and most likely the sealer will flake off over time.

TYPE OF STAIN	SOLUTION	DETERGENTS	MANUFACTURER
INORGANIC STAINS			
Cement Carbon Calcium Efflorescence Chalk Metallic residues Rust Cement-based grout Colored grout Wall paint	Acid	DETERGENT WITH AN ACID BASIS *	
		<b>DETERDEK</b> or similar	UNITED STATES > Fila Chemicals USA, Corp. 10800 N.W. 21st Street #170 Miami, FL 33172 USA Tel. +1-305-513-0708 email filausa@filasolutions.com
		<b>KERANET</b> (liquid) or similar	MAPEI Americas Headquarters 1144 E. Newport Center Drive Deerfield Beach, Florida 33442
ORGANIC STAINS			
Coca Cola Ice Cream Coffee Wine Beer Animal fats Vegetable fats Mustard Mayonnaise Ketchup Jam Linseed oil Lipstick Wax	Alkaline and neutral	LIMITED FOAM TYPE PRODUCT **	
		<b>PS87</b> or similar	UNITED STATES > Fila Chemicals USA, Corp. 10800 N.W. 21st Street #170 Miami, FL 33172 USA Tel. +1-305-513-0708 email filausa@filasolutions.com
		<b>FILACLEANER</b> or similar	UNITED STATES > Fila Chemicals USA, Corp. 10800 N.W. 21st Street #170 Miami, FL 33172 USA Tel. +1-305-513-0708 email filausa@filasolutions.com
		<b>Ammonium</b>	Universal
RESIDUAL RINGS of organic nature	Saline solution	Sodium hypochloride (bleach for white laundry)	Universal
Silicone oils Machine Oil Resins and glazes Coal and natural rubber Encres et feutres		<b>FILASOLV</b> or similar	UNITED STATES > Fila Chemicals USA, Corp. 10800 N.W. 21st Street #170 Miami, FL 33172 USA Tel. +1-305-513-0708 email filausa@filasolutions.com
		<b>Aceton</b>	Universal
		<b>NITRO - THINNER</b>	Universal
		<b>TURPENTINE</b>	Universal
		<b>TRICHLORETHYLENE</b>	Universal
		<b>CIF AMMONIACAL</b>	Universal
		<b>HAND CLEANSER</b>	Universal
Tire		<b>Ice+scraper</b>	
Silicone and chewin-gum			

N.B. When using the above products, the instructions on the package should be followed.

\* **Detergent with an acid base:** a detergent with an acid basis, specifically recommended after bath floor or wall installation, for the decalcification cleaning and the regular maintenance.

\*\* **Limited foam type product:** a limited foam type product degreasing and general cleaning, suitable for all types of stains but especially for removal of vegetable and animal fats.



TO DATE, THERE ARE NO STANDARDS RELATING TO RAISED OUTDOOR FLOORING. THE ONLY STANDARD THAT CAN ACT AS A REFERENCE IS UNI EN 12825, WHICH SPECIFIES THE FEATURES AND PERFORMANCE REQUIREMENTS OF RAISED FLOORINGS MAINLY INTENDED TO BE USED INSIDE BUILDINGS. PORCELAIN 2CM PAVER MEETS THE REQUIREMENTS OF THIS STANDARD (LISTED IN THE FOLLOWING TABLE). WITH REGARD TO THE "DYNAMIC LOAD - SHOCK-PROOF TEST AGAINST HARD BODIES", WE RECOMMEND CHOOSING THE MATERIAL ACCORDING TO THE INTENDED USE AND USING STRUCTURES THAT ARE MAXIMUM 100 MM HIGH.

Type of tests	Test result
Static load - Load test on the element	Test passed
Vertical loading test on column	Test passed, as declared by the support supplier
Permanent deformation test on the element	Test passed
Dynamic load - Shock-proof against hard bodies	Test not passed
Dynamic load - Shock-proof against soft bodies	Test passed
Length of the panel sides	Test passed
Panel orthogonality	Test passed
Straightness of the sides	Test passed
Panel thickness	Test passed
Panel warpage	Test passed
Vertical bending of the panels	Test passed

## FINE PORCELAIN STONEWARE

	Technical features	Reference standard or testing method	Value required according to standards	Assessed value
Dimensions and quality of the surface	Length and width (acceptable deviation (%) of the average size of each tile from the manufactured W size)	UNI EN ISO 10545-2	± 0,6 % (± 2,0 mm)	Compliant
	Thickness		± 5 % (± 0,5 mm)	
	Straightness of the edges		± 0,5 % (± 1,5 mm)	Compliant
	Orthogonality		± 0,5 % (± 2,0 mm)	Compliant
	Planarity		± 0,5 % (± 2,0 mm)	
	Surface quality		Minimum 95% of the tested tiles must be free from visible defects	Compliant
Physical properties	Mass of water absorbed	UNI EN ISO 10545-3	E <sub>b</sub> ≤ 0,5 %	≤ 0,1 %
	Breaking strength (S) – Flexural resistance (R)	UNI EN ISO 10545-4	S > 1300 N R > 35 N/mm <sup>2</sup>	> 10000 N > 45 N/mm <sup>2</sup>
	Resistance to frost	UNI EN ISO 10545-12	Request	Compliant
	Deep abrasion resistance	UNI EN ISO 10545-6	≤ 175 mm <sup>3</sup>	Compliant
	Resistance to thermal shocks	UNI EN ISO 10545-9	Available test method	Compliant
	Coefficient of linear thermal dilation	UNI EN ISO 10545-8	Available test method	Compliant
Chemical properties	Resistance to chemical products	UNI EN ISO 10545-13	They must not show relevant signs of chemical attacks	Compliant
	Stain resistance	UNI EN ISO 10545-14	Minimum class 3	Compliant
Safety	Coefficient of kinetic friction	ANSI A 137.1 - DCOF	Wet > 0.42	> 0,42
	Classification □□ non-slip	B.C.R.A.	D.M. μ>0.4	>0.4
		DIN 51130	Depending on the workplace or work area	R11
		DIN 51097	Depending on the wet areas subject to barefoot traffic	A+B+C

With the exception of special pieces and decors



PORCELAIN PAVERS PACKAGING INFORMATION						
Group Name	Product Name	Product Size	Quantity In Crate/sq ft	Quantitiy In Crate/pcs	Weight of Crate/lbs	Dimensions of Crate
20x40	Alpine, Dark, Desert, Dust, Moon, Sand, Silver, Smokey, Sunset, White, Mineral, Fossil, Mars	20"x40"x3/4"	233,3	42 (1pc in a box)	2,150	L42"xD42"xH26"
24x24	Light Grey, Dark Grey, Bluestone	24"x24"x3/4"	256	64 (2 pcs in a box)	2,300	L45"xD45"xH29"
	Ash, Coal, Metal, Sandstone	24"x24"x3/4"	240	60 (2 pcs in a box)	2,160	L47"xD31"xH29"
	Soft Cream, Pietra Grey, Rustic Grigio, Pocono, Forge	24"x24"x3/4"	240	60 (2 pcs in a box)	2,160	L47"xD32"xH30"
	Caramel, Honey, Milk, Storm	24"x24"x3/4"	256	64 (2 pcs in a box)	2,300	L45"xD45"xH29"
	Nest, Burnt, Rocky, Flake	24"x24"x3/4"	240	60 (2 pcs in a box)	2,160	L47"xD31"xH29"
	Philly Grey, Philly White, Philly Beige	24"x24"x3/4"	256	64 (2 pcs in a box)	2,300	L48"xD32"xH30"
	Urban White, Basalto Grey, Basalto Red, Basalto Black	24"x24"x3/4"	256	64 (2 pcs in a box)	2,300	L45"xD45"xH29"
Wood Look	Carpino, Rovere Impero, Rovere Sabbia	8"x48"x3/4"	213	80 (2 pcs in a box)	1,920	L48"xD32"xH28"
		16"x48"x3/4"	256	48 (1 pc in a box)	2,304	L51"XD43"xH20"
Concrete Look	Caramel, Honey, Storm, Concrete Antracite, Concrete Beige, Concrete Grigio	40"x40"x3/4"	233,3	21 (1 pc in a box)	2,000	
Cement Look	Antracite, Avorio, Grigio, Inox, Space Dark	32"x32"x3/4"	284,5	40 (1 pc in a box)	2,560	L47"xD37"xH37"
Modular Pattern 4 Sizes	Ash, Coal, Metal, Sandstone	12"x24"x3/4"	240	120 (3 pcs in a box)	2,160	L47"xD31"xH29"
		18"x18"x3/4"	243	108 (3 pcs in a box)	2,200	L47"xD39"xH23"
		18"x36"x3/4"	243	54 (2 pcs in a box)	2,200	L47"xD39"xH23"
		24"x24"x3/4"	240	60 (2 pcs in a box)	2,160	L47"xD31"xH29"
24x36	Light Grey, Dark Grey, Bluestone, Urban White, Basalto Grey, Basalto Red, Basalto Black	24"x36"x3/4"	288	48 (1pc in a box)	2,600	L36"xD48"xH22"
Modular Pattern 3 Sizes	Light Grey, Dark Grey, Caramel, Honey, Milk, Storm, Bluestone, Urban White	12"x24"x3/4" 24"x24"x3/4" 24"x36"x3/4"	252	14 Sets	2,200	L48"xD38"xH32"
24"x48"	Light Grey, Dark Grey, Milk, Honey, Storm, Caramel, Slate, Taupe, Romantic White, Romantic Beige, Urban White, Basalto Grey, Basalto Red, Basalto Black	24"x48"x3/4"	256	32 (1 pc in a box)	2,304	L48"xD26"xH24"
	Nest, Burnt, Rocky, Flake	24"x48"x3/4"	280	35 (1 pc in a box)	2,520	L49"xD35"xH30"
	Philly Grey, Philly White, Philly Beige	24"x48"x3/4"	208	26 (1 pc in a box)	2,000	L48"xD32"xH30"
24"x72"	Light Grey, Dark Grey	24"x72"x3/4"	264	22 (1 pc in a box)	2,400	L72"xD36"xH24"
48"x48"	Aspen White, Volcano Grey, Aspen Grey, Aspen Smoke, Soft Ash, Soft Grey, Soft Beige, Terrazzo Antracite, Terrazzo Grey, Terrazzo White	48"x48"x3/4"	288	18 (1 pc in a box)	2,600	L48"xD48"xH20"
Porcelain Veneer	Avorio, Beige, Brown, Grigio	8"x24"x3/8"	579	448 (7 pcs in a box)	2,381	L47"xD32"xH30"
	Avorio, Beige, Brown, Grigio	Corner 8"x24"x3/8"	sold by pcs	40 (7 pcs in a box)		
Porcelain Ledger	Taupe, Beige, White, Grey, Dark	6"x24"x3/8"	528	528 (11 pcs in a box)	1,958	L47"xD32"xH30"
		Corner 6"x(8"+4")x3/8"	sold by pcs	48 (6 pcs in a box)		
3cm	Bluestone Dark, Bluestone Grey, Pietra Barge	16"x32"x1 1/4"	192	54 (2 pcs in a box)	2,656	L50"xD32"xH22"
Coping	Dark/Light Grey (Mitered Edge)	12"x72"x2" overhang	180	30 pcs	1,920	L72"xD36"xH22"
	Milk, Honey, Storm (1 side bullnose & 1 side eased edge)	13"x24"x3/4"	130	60 pcs (2 pcs in a box)	1,300	L42"xD31"xH25"
Open Crate Charge: \$50						





SCAN TO VISIT OUR  
YOUTUBE CHANNEL

**100%**  
**MADE IN ITALY**



**RECYCLED  
CONTENT**

