



Retaining Walls & Vertical Features

Unlimited creative possibilities exist for retaining soil or building vertical features like grill islands and firepits. Now the durability of EnduraColor™ is available, thanks to our U-Cara® Fascia Panels.

Pavers: Treo® Smooth (Granite Mist) and Granito™ (Sabia) Hex with Copthorne® (Basalt) accent
Wall: U-Cara® Wall Mount System with U-Cara Smooth Fascia Panels (Granite Mist)



TOP Almond Grove Fusion Pitched with Almond Grove Fusion Smooth backsplash and Beacon Hill™ Flagstone pavers

LEFT Umbriano® French Grey with Natural Stone Coping

RIGHT Granite Smooth with Series™ Black Granite accent and Arcana™ slabs

Color selection should be chosen from actual samples.



U-Cara® Multi-Face Wall System

2019

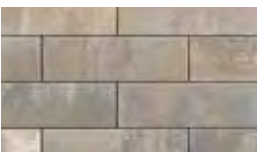
U-Cara received the "red dot" award for high design quality and innovation.

This patented wall system, exclusive to Unilock, represents a revolution in wall design. With U-Cara it's now possible to design walls, pillars, planters, fire features, grill islands and more, with the refined surface and long-lasting color of exclusive Unilock EnduraColor finishes.



FASCIA PANELS

SMOOTH PANEL



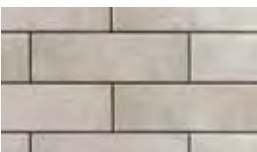
ALMOND GROVE FUSION



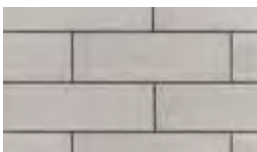
FOSSIL



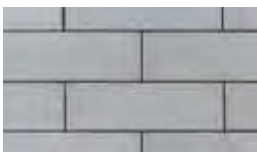
GRANITE MIST



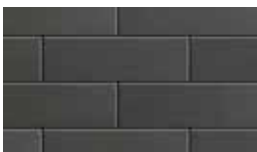
INDIANA BUFF **NEW**



STERLING **NEW**



OPAL BLEND



MIDNIGHT CHARCOAL

UMBRIANO PANEL



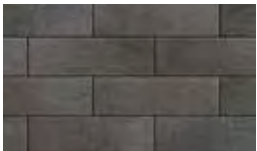
FRENCH GREY



SUMMER WHEAT



WINTER MARVEL



MIDNIGHT SKY



GRENADA WHITE **NEW**

PITCHED PANEL



ALMOND GROVE FUSION

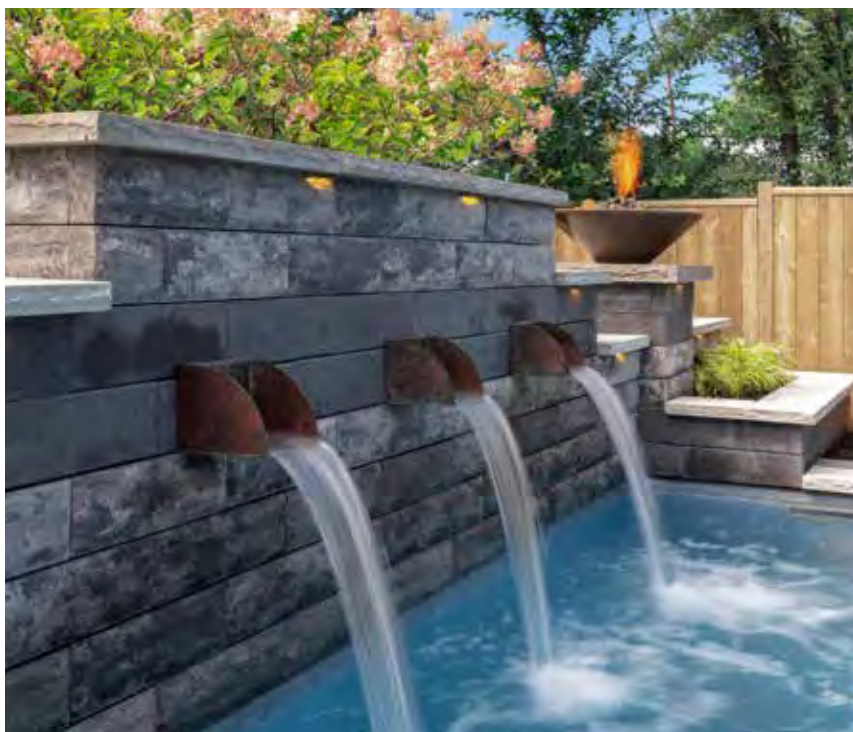


GRANITE MIST

SERIES 3" PANEL



BLACK GRANITE



- TOP** Granite Mist Pitched with Beacon Hill™ Smooth (Granite Mist) slabs
- LEFT** Granite Mist Pitched with Umbriano® Midnight Sky accent and Natural Stone coping
- RIGHT** Granite Mist Pitched with Umbriano French Grey Mattoni™ (Dark Charcoal) accents

Color selection should be chosen from actual samples.

U-Cara® Multi-Face Wall System



1 BASE UNIT



**UNIVERSAL
BASE UNIT**
19 x 14 x 2"
482 x 355 x 55mm

2 BACKER BLOCKS



**SURETRACK
STANDARD**
6 x 8 x 6"
150 x 200 x 150mm



**SURETRACK
LARGE BACKER
CORNER/PILLAR**
6 x 7 x 12"
150 x 175 x 300mm



**SURETRACK
CORNER INSERT**
L = 2"
50mm

3 FASCIA PANELS

6" STANDARD FASCIA



6 x 18½ x 2⅜"
150 x 466 x 60mm

3" SERIES PANEL



3 x 9¼ x 2⅜"
75 x 233 x 60mm

2 UNIT CORNER BUNDLE



**CLOSED-END
FASCIA PANEL**
6 x 21 x 2⅜"
150 x 533 x 60mm



**STANDARD FASCIA
HALF PANEL**
6 x 9¼ x 2⅜"
150 x 233 x 60mm

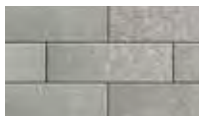
4 FASCIA PANEL STYLES



SMOOTH



PITCHED



UMBRIANO



SERIES

5 COPING

ENDURA™ COPING



SEE PAGE 152

UMBRIANO COPING



SEE PAGE 153

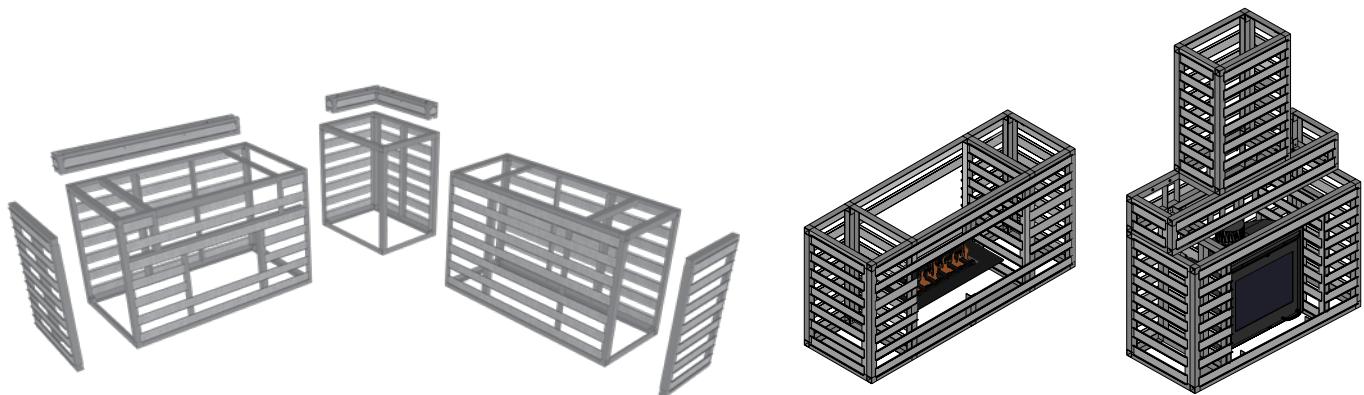
UNIVERSAL COPING



SEE PAGE 156

U-Cara® Modular System

Our U-Cara Modular System offers a variety of aluminium frames that can be mixed and matched to construct vertical features like grill islands, fire features and pillars.



Speak to your contractor to select a design and a U-Cara fascia panel finish to suit your project.

U-Cara® Wall Mount System

The U-Cara Wall Mount System allows you to put the finishing touches on your project by cladding existing structures with U-Cara fascia panels.

Create matching vertical features with the U-Cara Modular System to complete your cohesive design.



Ideal for garden sheds, wing walls, exposed foundation, existing steps or concrete and wood substrates.



TOP Granite Blend and Midnight Charcoal (mixed on site) with Beacon Hill™ Smooth slabs and Copthorne® (Basalt) accent

BOTTOM Granite Blend and Midnight Charcoal accent with Artline™ (Fossil) pavers and Natural Stone (Black river) coping

Color selection should be chosen from actual samples.

PRODUCT PAIRINGS



Paver

Westport™ Smooth
See page 63



Pool & Wall Coping

Universal
See page 156

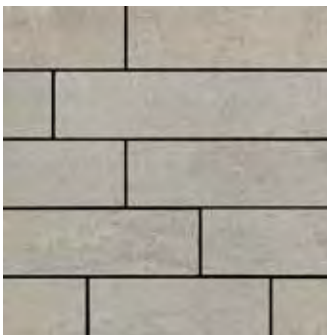


Steps

SienaStone™ Smooth
See page 157

CLASSIC

Lineo™ Dimensional Stone



DUSK **NEW**



GRANITE BLEND



SAFARI **NEW**

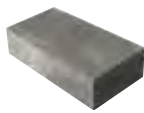


MIDNIGHT CHARCOAL

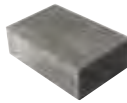
4 UNIT RANDOM BUNDLE



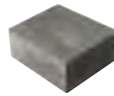
4 x 24 x 8"
100 x 600 x 200mm



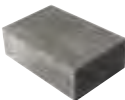
4 x 20 x 8"
100 x 500 x 200mm



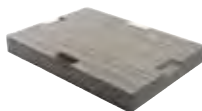
4 x 16 x 8"
100 x 400 x 200mm



4 x 12 x 8"
100 x 300 x 200mm



PILLAR / CORNER
4 x 16 x 8"
100 x 400 x 200mm



U-GRIP™ BASE PAD
14 x 19 x 2"
355 x 482 x 55mm

CLASSIC

Brussels Dimensional Stone®



LIMESTONE



MAHOGANY



SANDSTONE



COFFEE CREEK



MIDNIGHT CHARCOAL



STANDARD
12 x 4 x 8"
300 x 100 x 200mm



U-GRIP™ BASE PAD
14 x 19 x 2"
355 x 482 x 55mm

SUNSET FIREPIT KITS

Available in Coffee Creek, Mahogany and Sandstone



Round



Square



PRODUCT PAIRINGS



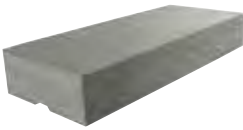
Paver
Brussels Block®
See page 64



Pool & Wall Coping
Brussels Fullnose™
See page 64



Pool & Wall Coping
Universal
See page 156



Steps
SienaStone™ Smooth
See page 157

Sandstone with Brussels Fullnose Sandstone coping
Color selection should be chosen from actual samples.

CLASSIC

Pisa™



BRUSSELS DIMENSIONAL STONE / PISA2



GRANITE



NATURAL



MAHOGANY



SIERRA



STANDARD
8 x 12 x 6"
200 x 300 x 150mm



TAPERED
8 x 12 x 6"
200 x 300 x 150mm



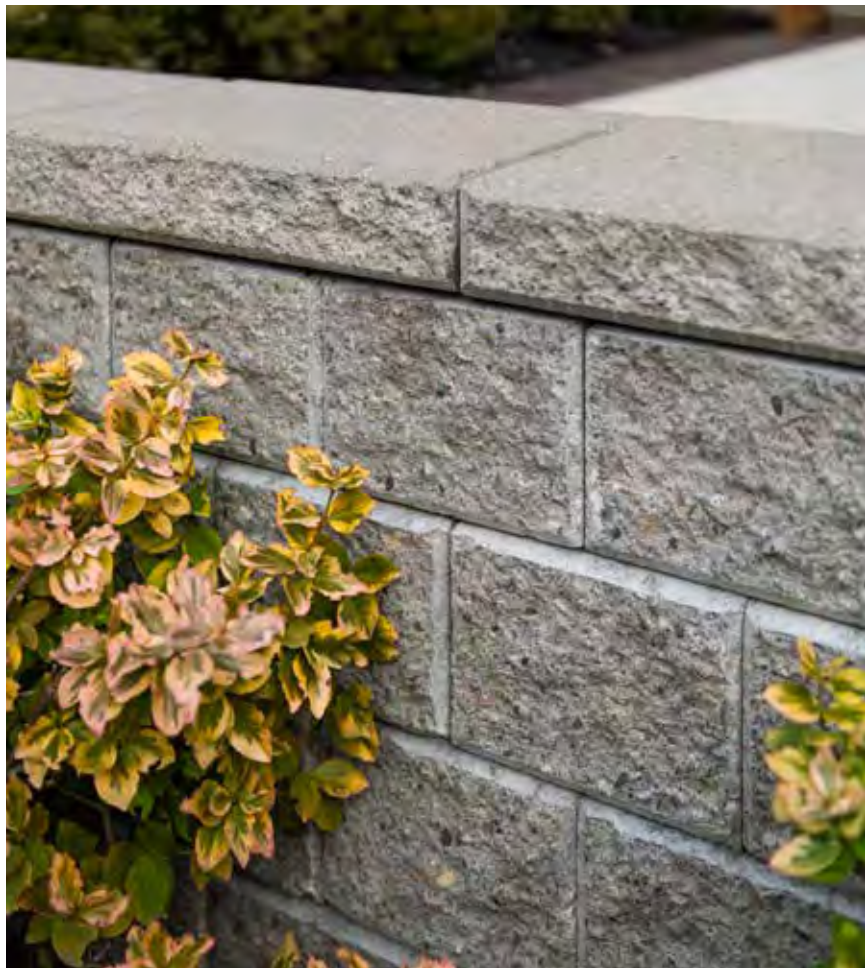
CORNER
8 x 12 x 6"
200 x 300 x 150mm



24" COPING
12 x 24 x 3"
300 x 600 x 75mm



U-GRIP™ BASE PAD
14 x 19 x 2"
355 x 482 x 55mm



PRODUCT PAIRINGS



Paver
Hollandstone™
See page 67



Pool & Wall Coping
Pisa™
See page 156



Steps
SienaStone™
See page 157

Natural with Pisa coping (Natural)
Color selection should be chosen from actual samples.



PRODUCT PAIRINGS



Paver

Windermere™ Smooth
See page 61



Pool & Wall Coping

Pisa™ Smooth
See page 156



Steps

SienaStone™ Smooth
See page 157

TOP Granite Blend with Universal Coping (Midnight Charcoal)

BOTTOM Granite Blend with Universal Coping (Light Grey) and Natural Stone (Black River) pillar cap

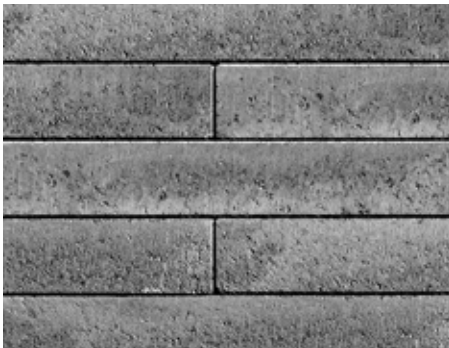
Color selection should be chosen from actual samples.

CLASSIC

Pisa Smooth™



CLIFFSIDE GREY



GRANITE BLEND



IRISH COAST



STANDARD
10⁷/₈ x 21³/₄ x 3³/₈"
275 x 550 x 85mm



COPING
13⁷/₈ x 21³/₄ x 3³/₈"
350 x 550 x 85mm



CORNER
10⁷/₈ x 21³/₄ x 3³/₈"
275 x 550 x 85mm



U-GRIP™ BASE PAD
14 x 19 x 2"
355 x 482 x 55mm



CLASSIC

SienaStone™



NATURAL



CORNER 45°
(LEFT & RIGHT)
20 x 43⅓ x 7¼"
500 x 1100 x 185mm



CORNER 90°
(LEFT & RIGHT)
20 x 43⅓ x 7¼"
500 x 1100 x 185mm



STANDARD 925
37½ x 47¼ x 7¼"
925 x 1200 x 185mm



STANDARD 500
20 x 47¼ x 7¼"
1500 x 200 x 185mm



STANDARD 333
13 x 47¼ x 7¼"
333 x 1200 x 185mm



COPING
20 x 47¼ x 7¼"
500 x 1200 x 185mm

Color selection should be chosen from actual samples.



CLASSIC

SienaStone™ Smooth



GRANITE BLEND



SAFARI **NEW**



STANDARD 375

$14\frac{3}{4} \times 47\frac{1}{4} \times 7"$
375 x 1200 x 180mm



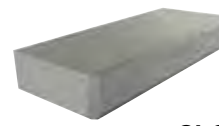
CORNER 375

$14\frac{3}{4} \times 38\frac{3}{8} \times 7"$
375 x 1200 x 180mm



COPING 383

$15 \times 47\frac{1}{4} \times 7"$
383 x 1200 x 180mm



**CLOSED-END
COPING 383**

$15 \times 47\frac{1}{4} \times 7"$
383 x 1200 x 180mm

Color selection should be chosen from actual samples.

Granite Blend

Firepits and Fire Features

Imagine flames crackling on a cool night, curling up under the stars with friends and family, and sipping a warm cup of hot chocolate. Soak up that sense of bliss from your backyard with a Unilock firepit!





HEAT DAMAGE PREVENTION

To ensure a long-lasting fire feature, direct exposure to extreme heat from an open flame should be avoided. Always construct fire features with a protective heat barrier such as a metal insert, refractory blocks or approved firebrick to prevent potential heat damage.

NOTE: Large fires and extreme heat are detrimental to concrete.

SUNSET FIREPIT KIT

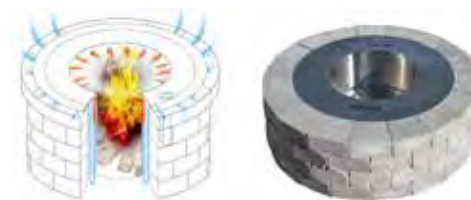


Square shape also available.

UNILOCK REDUCED SMOKE INSERT

**ZENTRO TECHNOLOGY FIREPIT INSERT
AVAILABLE FOR ALL FIREPIT KITS.**

There's nothing like relaxing around a roaring fire to bring family and friends closer together. But with ordinary firepits, smoke always blows in someone's face - usually yours. With Unilock Reduced Smoke Inserts, stinging eyes are a thing of the past. Zentro's patent-pending technology reburns smoke before it gets anywhere near your eyes. Say hello to good times and goodbye to smoke.



FIREPIT INSERT

Firepit kit comes with a firepit insert (sold separately) that fits securely into the firepit.

Outdoor Kitchens

There's nothing more fun than cooking al fresco. An outdoor kitchen is an entire, defined space dedicated to preparing meals among family and friends, but with a much livelier backdrop!



Learn about things to consider when designing your outdoor kitchen.





Design Considerations

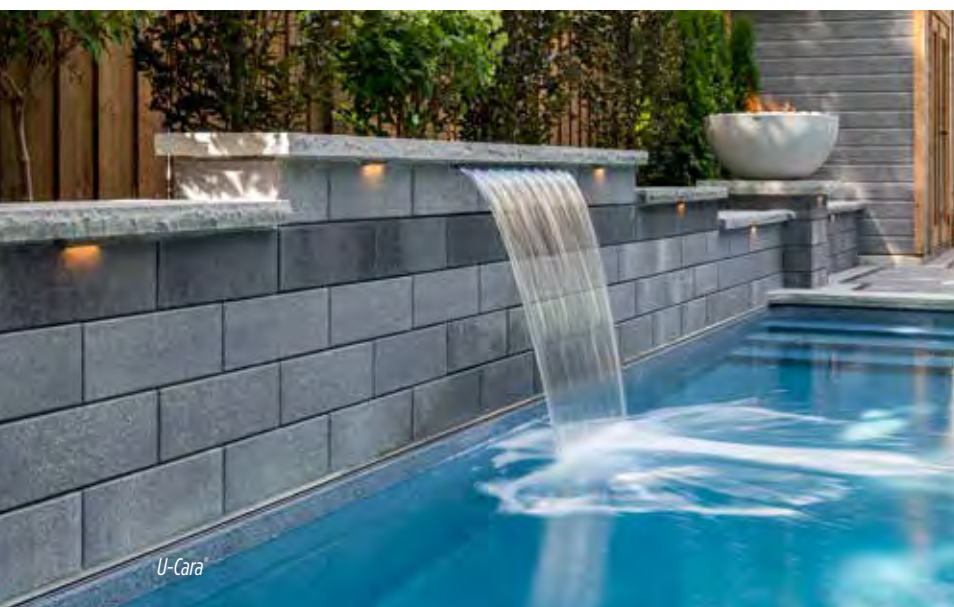
Think about how you'll use the space, the outdoor appliances you need, the best location for a kitchen in your yard, and how it will weather in the elements over time.



From a practical side, an outdoor kitchen is an extension of your home's living and entertaining space, allowing you to make the most of your backyard.

Water Features & Pillars

From fountains and ponds, to waterfalls and custom water features, these soothing additions are a popular way to enhance your landscape design.



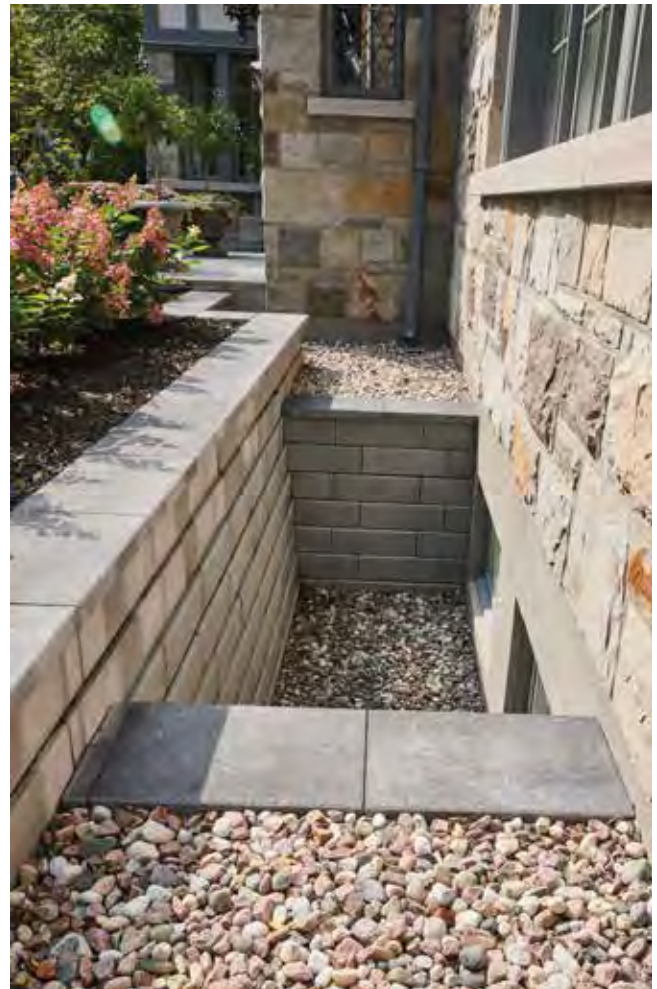
Elevate your outdoor space to new heights by incorporating pillars into your design. With varying heights and functions, pillars create a sense of permanence and strength while also adding visual flair. Take it a step further by incorporating landscape lighting into your pillars to set the mood at night.

Creative Ideas

The versatility of Unilock products provides a playground for your imagination. From mixing patterns and colors to create a custom sports court, to utilizing Unilock wall systems to beautify a utilitarian window well, the possibilities are endless!



This small storage area becomes a thing of beauty, paved with Unilock Beacon Hill™ Smooth and Universal Coping treads.





Steps, Treads, Coping & Caps

From classic, fullnose shapes to pitched-face edges, our steps, treads and coping offer a wide variety of choices for the finishing touch on your project.

U-Cara® Pitched (Granite) with Universal Coping (Natural)

Endura™ Coping **New**

Coping

ENDURACOLOR™



ALMOND GROVE FUSION



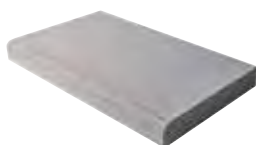
GRANITE MIST



FOSSIL



OPAL BLEND



BULLNOSE
14 x 24 x 2³/₈"
360 x 600 x 60mm



CHAMFERED
14 x 24 x 2³/₈"
360 x 600 x 60mm



Umbriano®

Coping

ENDURACOLOR™

STEPS, TREADS, COPING & CAPS

Exclusive to **UNILOCK**



FRENCH GREY



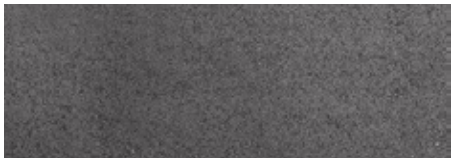
GRENADA WHITE



SUMMER WHEAT



WINTER MARVEL



MIDNIGHT SKY



BULLNOSE
14 x 24 x 2 3/8"
360 x 600 x 60mm



CHAMFERED
14 x 24 x 2 3/8"
360 x 600 x 60mm



Ledgestone™

Coping & Step

SPECIAL ORDER PRODUCT



BUFF



GREY



COPING

12 x 24 x 2³/₄"
305 x 610 x 70mm



CLOSED END COPING

12 x 24 x 2³/₄"
305 x 610 x 70mm



FULLNOSE COPING

12 x 24 x 2³/₈"
305 x 610 x 60mm



48" STEP

24 x 48 x 6"
610 x 1220 x 150mm

REALA™

Cast from natural stone

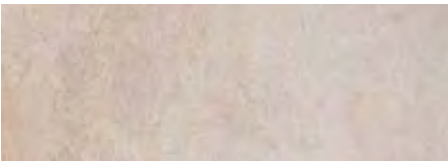


Color selection should be chosen from actual samples.

Natural Stone

Coping & Steps

AVAILABLE IN BOTH ROCK FACE AND SMOOTH



INDIAN COAST SANDSTONE



IVORY SAND SANDSTONE



GREYFIELD SANDSTONE

AVAILABLE IN ROCK FACE ONLY



STONE CLIFF GREY SANDSTONE



BLACK RIVER LIMESTONE



48" LENGTH
14 x 48 x 2"
360 x 1200 x 50mm



72" LENGTH
14 x 72 x 2"
1830 x 360 x 50mm



48" LENGTH
16 x 47 1/4 x 6"
400 x 1200 x 150mm



72" LENGTH
16 x 70 3/4 x 6"
400 x 1800 x 150mm



Universal Coping

ENDURACOLOR™



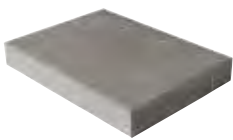
TAN



LIGHT GREY



MIDNIGHT CHARCOAL



COPING/STEP
14 x 19 x 2 3/4"
360 x 480 x 70mm



Pisa™ Smooth Coping



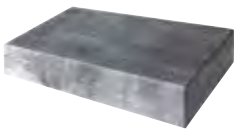
CLIFFSIDE GREY



GRANITE BLEND



IRISH COAST



COPING
13 7/8 x 21 3/4 x 3 3/8"
350 x 550 x 85mm



Pisa Coping



GRANITE



MAHOGANY



NATURAL



SIERRA



24" COPING
12 x 24 x 3"
300 x 600 x 75mm

SienaStone™ Smooth Step



GRANITE BLEND



DUSK



SAFARI



CLIFFSIDE GREY **NEW**



IRISH COAST **NEW**



MIDNIGHT CHARCOAL



48" STEP
20 x 47¼ x 7¼"
500 x 1200 x 180mm



72" STEP
20 x 70¾ x 7¼"
500 x 1800 x 180mm

Not available in Cliffside Grey or Irish Coast

NOTE: 2 Edge details available on the same unit (Chamfer and Rounded)
Contact a Unilock representative for more information.

SienaStone™ Step



GRANITE



MAHOGANY



NATURAL



48" STEP
20 x 47¼ x 7¼"
500 x 1200 x 185mm